



## BENT AXIS PISTON PUMP X SERIES

A fixed displacement pump of axial piston design with a tapered piston bent axis rotary group. Designed especially to meet the requirements of truck applications.

### Features:

- 40° bent axis design giving high power/weight ratio, small overall dimensions, optimum efficiency and economic design
- Simple change of direction of rotation
- 7 Piston Design
- Flange and shaft designed for direct mounting on truck gearbox PTO's
- Does not require additional bearing support for remote mounting. Use Flange LS024
- By-pass valve available for Live-Drive applications

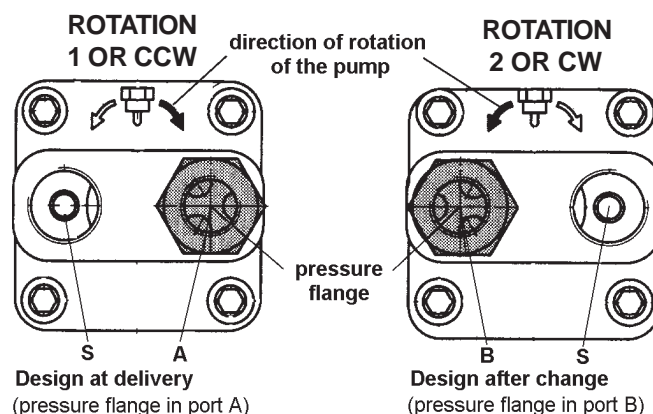
### Pump Specification

CODE	DISPLACEMENT CM <sup>3</sup> / REV	PRESSURE BAR (CONT)	MAX SPEED RPM	SUCTION PORT	PRESSURE PORT	RECOMMENDED SUCTION FITTING	WEIGHT KG
X35 0513270x	35	350	2600	3/4"BSP	1/2"BSP	HTPF34P112	10
X40 0514430x	40	350	2200	3/4"BSP	1/2"BSP	HTPF34P112	10
X50 0513010x	50	350	2200	1"BSP	3/4"BSP	HTPF100P200	11
X65 0512980x	65	350	2100	1"BSP	3/4" BSP	HTPF100P200	11
X80 0513220x	82	350	2000	1 1/4"BSP	1" BSP	HTPF114P200	16
X110 0513640x	108.3	350	1750	1 1/4"BSP	1" BSP	HTPF114P200	16

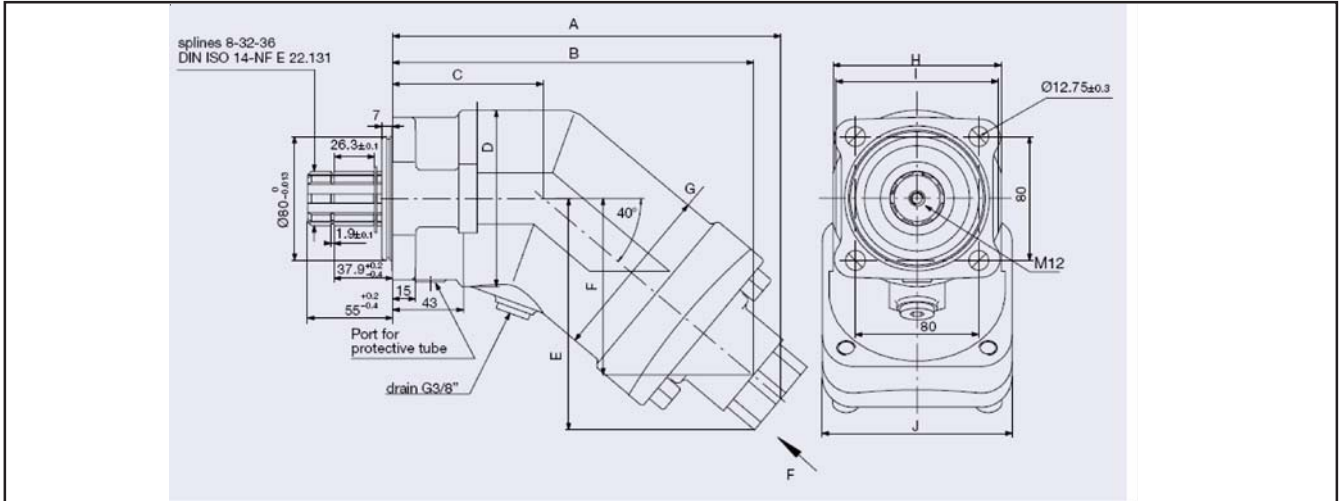
x = ROTATION OF SHAFT "1" OR "2". SEE BELOW "DIRECTION OF ROTATION".

**NOTE:** Direction of rotation is determined by looking at the pump shaft.

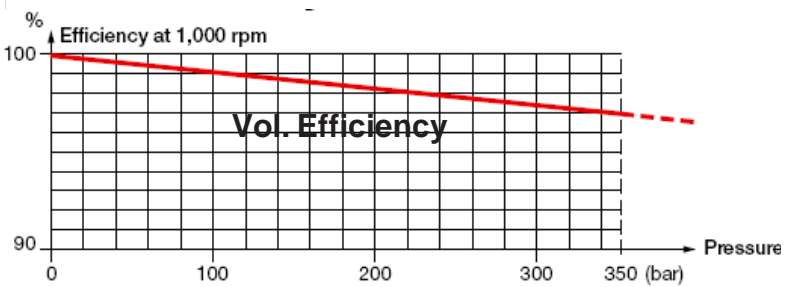
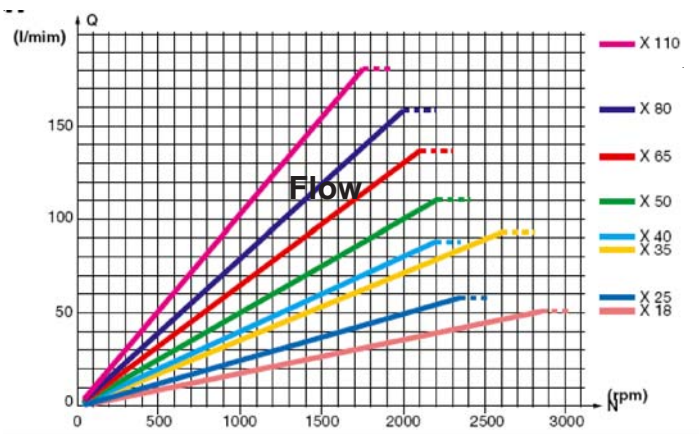
### Direction of Rotation and Change of Direction



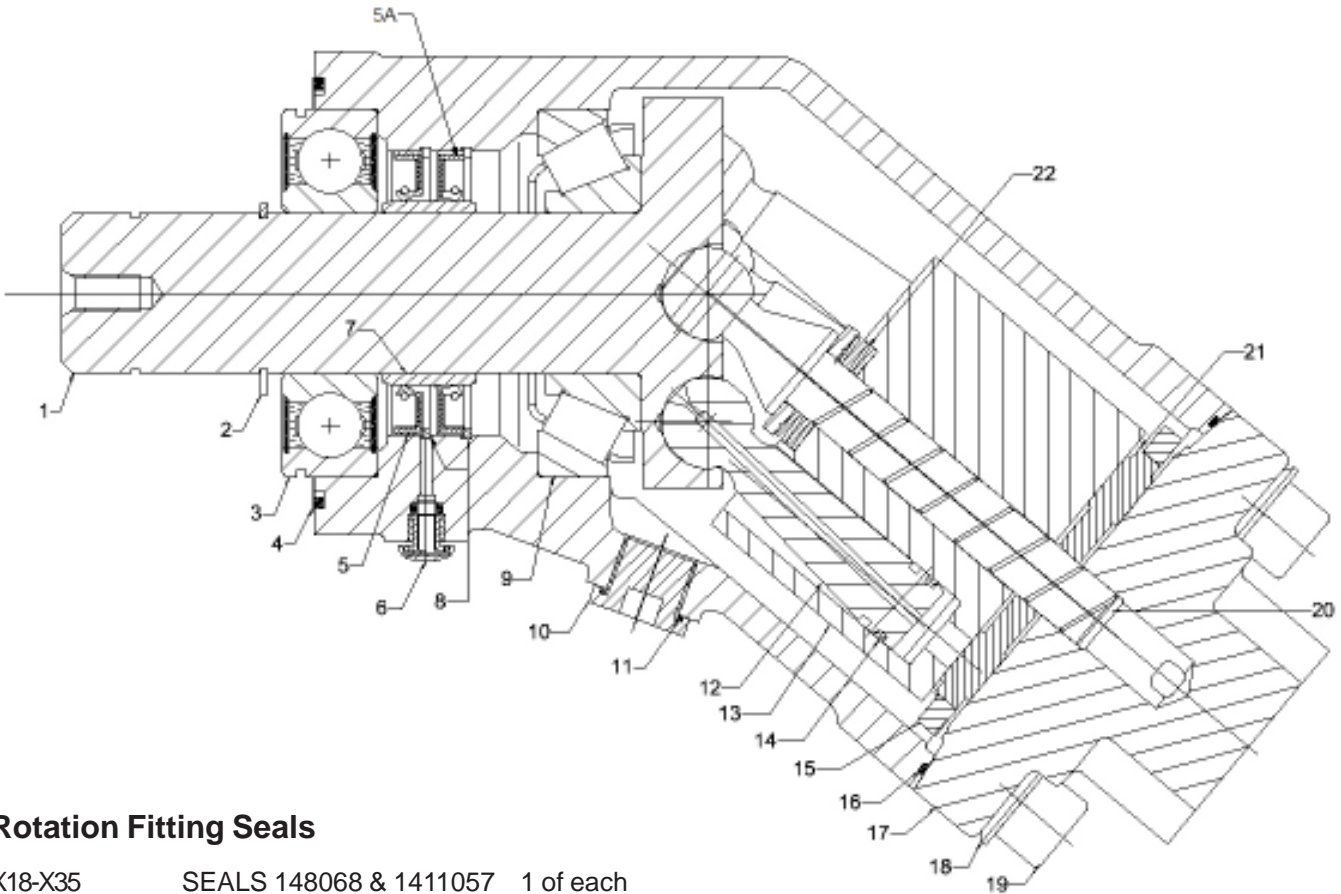
**Unit Dimensions.**



Model	A	B	C	D	E	F	G	H	I	J	K	L	M
X35	203	189	86	103	112	87	103	98	98	108	40	3/4"	1/2"
X40	203	189	86	103	112	87	103	98	98	108	40	3/4"	1/2"
X50	219	203	86	103	129	98	103	98	98	108	50	1"	3/4"
X65	219	203	86	103	129	98	103	98	98	108	50	1"	3/4"
X80	251	233	97	114	149	114	114	109	105	123	56	1 1/4"	1"
X110	251	233	97	114	149	114	114	109	105	123	56	1 1/4"	1"



## Spare Parts

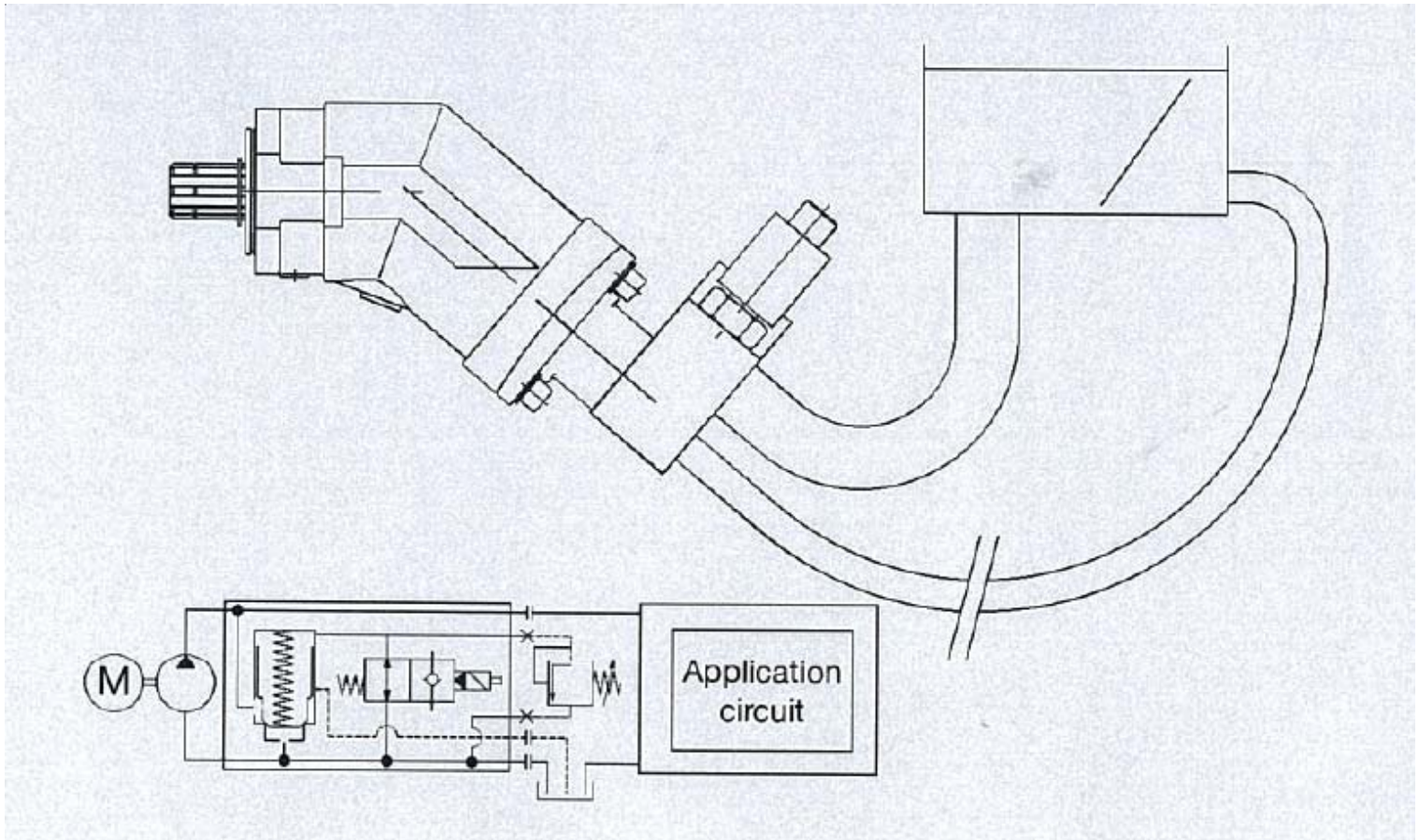


### Rotation Fitting Seals

X18-X35        SEALS 148068 & 1411057    1 of each  
 X50-X65        SEALS 148833 & 1411047    1 of each  
 X80-X110       SEALS 1481691 & 1411048   1 of each

REF	CODE	DESCRIPTION	QTY	REF	CODE	DESCRIPTION	QTY
1		INPUT SHAFT	1	13		PUMPING ELEMENT BODY	1
2	0070100300	CIRCLIP 35E UNI 7435	1	14		PISTON SEAL	7
3	0100101500	BEARING 6307LU	1	15		RING	1
4	1411049	QUAD RING NBR 88.57x2.51	1	16	14110461	X18-X65 ORING NBR 95x2	1
5	SEAL 40X62X6	SEAL 40X62X6 BABSL	1	16	1411219	X80-X110 ORING NBR 109X1.78	1
5A	130392	SEAL 40X62X6 VITON 5.0bar	1	17		DISTRIBUTOR BODY	1
6		VENT	1	18		TAPER WASHER	4
7		SHAFT SLEEVE	1	19		CAP SCREW	4
8		CIRCLIP	2	20		CENTRE PIN	1
9	0100501000	BEARING 30307	1	21		VALVE PLATE	1
10		CASE DRAIN/BLEED PLUG	1	22		SPRING WASHERS	4
11		ORING NBR 19x2	1		SKPP010	SEAL KIT	1
12		PISTON	7				

## BYPASS VALVE FOR X PUMPS



**Part Numbers** - BP0515130 to suit X50 or X65 Pump  
 BP0515120 to suit X80 or X110 Pump

- Notes:**
1. Where the system direction control valve is open centre (P to T) in the neutral (or off position) the Bypass valve does not require an independent drain. If the system valve is closed centre an independent 1/2" drain **must** be installed.
  2. Where the pump remains exposed to the system pressure relief valve when the Bypass valve is in Bypass, the pressure relief shown in the above graphic is not required.

**\*\* SPARE PARTS NOTE:** The Solenoid & Valve assemblies XP63BP & XP80BP will fit later model (Round Solenoid) bypass valves for the X Pump. The bypass valve complete is not interchangeable.