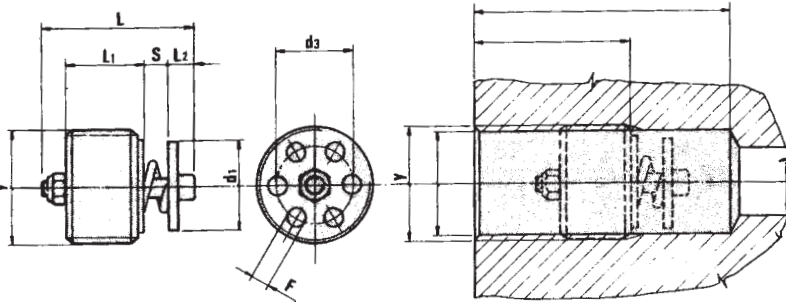




No. 1 in Transport Hydraulics

1/2" BSP VELOCITY FUSES



A line of valves designed to allow free flow from an actuator if the descent speed of the load is within that pre-set or to lock flow, partially or totally, if, for any reason, the descent speed is over that pre-set, for example in the case of hose failure.

These valves should be screwed directly into the actuator or into an in-line manifold as close as possible to the actuator which has to be controlled.

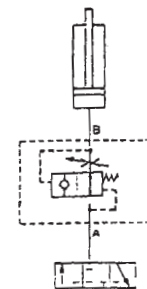
The sealing parts of the valve are superfinished and leak proof.

It is recommended to fit a flow regulator valve downstream of the hose burst valve at the end of the flexible hose. Pre-set the hose burst check valve (dimensions "s") for a flow less than or equal to 1.5 the regulated flow.

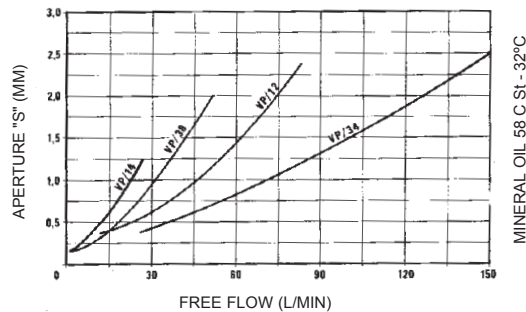
- Filtration level: 25 micron or better

Max working pressure 350 bar / Flow see performance graph

L1	L	F	d3	d1	L2	y
13	29	4.5	13	15	5.5	1/2"



x	Adjustments
03	by screw
y	Port Size
08	1/2" BSPP



Technical Features	
Working Temperature	-30 > +80°C
Max Working Pressure	350 bar
Hydraulic Oil Mineral	Oil Group H-LP DIN 51524
Oil Viscosity	10-70 cSt at 40° C
Filtration	25µm

