

## AIRSWITCHES **3.3.2.XXX.0000**



- ✓ A complete range of **innovative pneumatic switches**, designed for the driver's cab of today's commercial vehicles.
- ✓ The new airswitches fit **directly in the provided locations** in the aircontrols' panel, usually placed beside the driver's seat.
- ✓ Their **reduced size** also allows to **install the airswitches in the dashboard**, where they perfectly integrate for function and aesthetics.
- ✓ The new range includes models with fixed and **lockable positions** and other ones with **spring return to neutral**, in order to comply with the latest **CE safety directives**.

### SPECIFICATIONS

Air pressure: 12 bar max.  
Electric supply: 24 V max., DC.

WEIGHT: kg. 0,130  
kg. 0,250 (3.3.2.030)

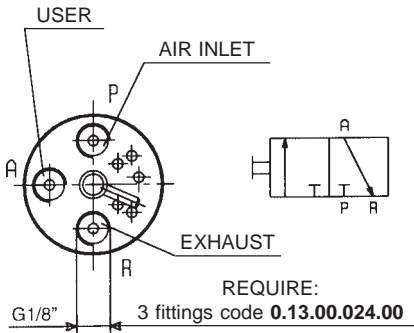
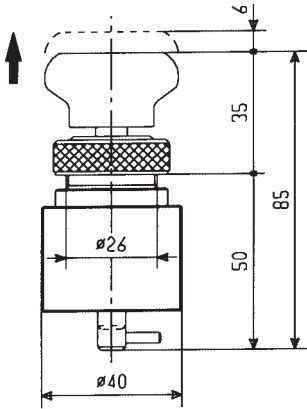
### 3.3.2.XXX.0000

BASIC SERIAL NUMBER \_\_\_\_\_

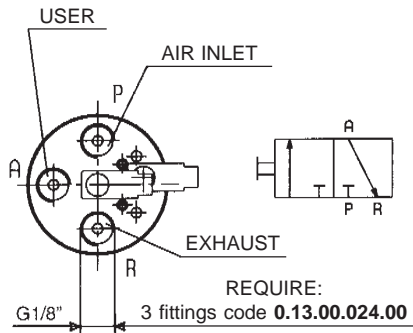
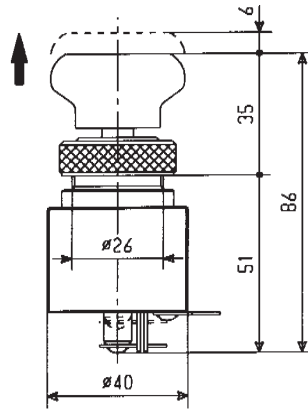
TYPE

- 025** = ONE WAY, NO WARN LIGHT
- 026** = ONE WAY, PROVISION FOR WARN LIGHT
- 027** = ONE WAY, SPRING RETURN, NO WARN LIGHT
- 028** = ONE WAY, TWIST-LOCK AND SPRING RETURN, NO WARN LIGHT
- 029** = ONE WAY, TWIST-LOCK AND SPRING RETURN, PROVISION FOR WARN LIGHT
- 030** = TWO WAYS, SPRING RETURN TO NEUTRAL

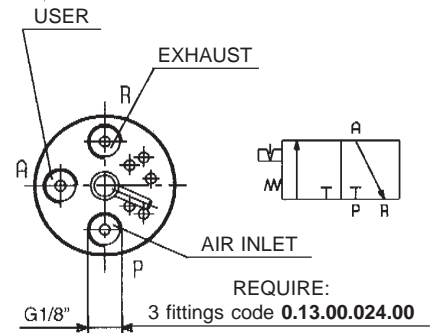
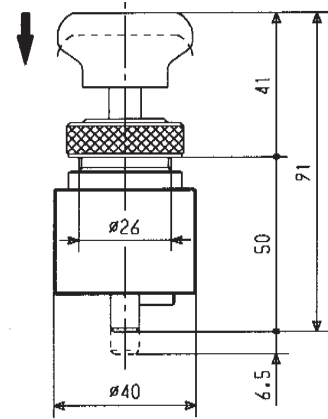
**CODE 3.3.2.025.0000**  
**ONE WAY AIRSWITCH,**  
**NO WARN LIGHT**



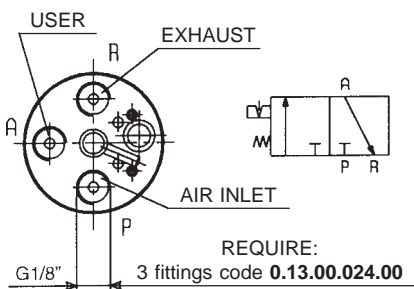
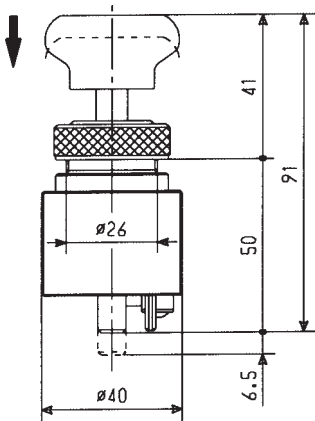
**CODE 3.3.2.026.0000**  
**ONE WAY AIRSWITCH,**  
**PROVISION FOR WARN LIGHT**



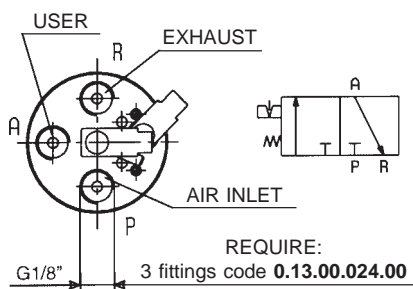
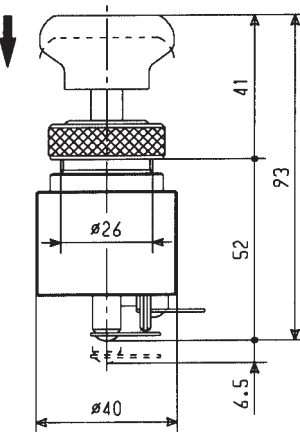
**CODE 3.3.2.027.0000**  
**ONE WAY AIRSWITCH,**  
**SPRING RETURN, NO WARN LIGHT**



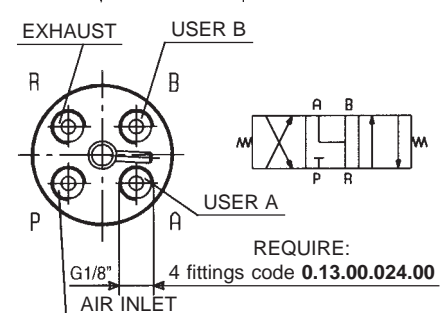
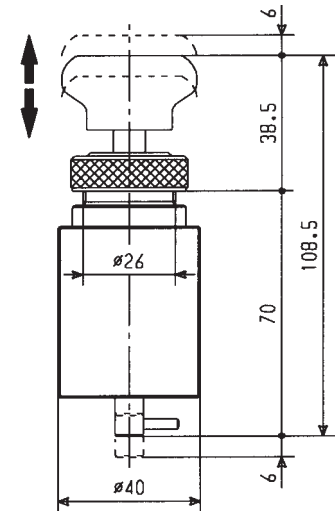
**CODE 3.3.2.028.0000**  
**ONE WAY AIRSWITCH,**  
**SAFETY TWIST-LOCK AND**  
**SPRING RETURN, NO WARN LIGHT**



**CODE 3.3.2.029.0000**  
**ONE WAY AIRSWITCH,**  
**SAFETY TWIST-LOCK AND**  
**SPRING RETURN,**  
**PROVISION FOR WARN LIGHT**



**CODE 3.3.2.030.0000**  
**TWO WAYS AIRSWITCH,**  
**SPRING RETURN TO**  
**NEUTRAL**



Push the knob and twist clockwise to lock ON position.

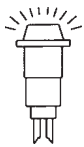
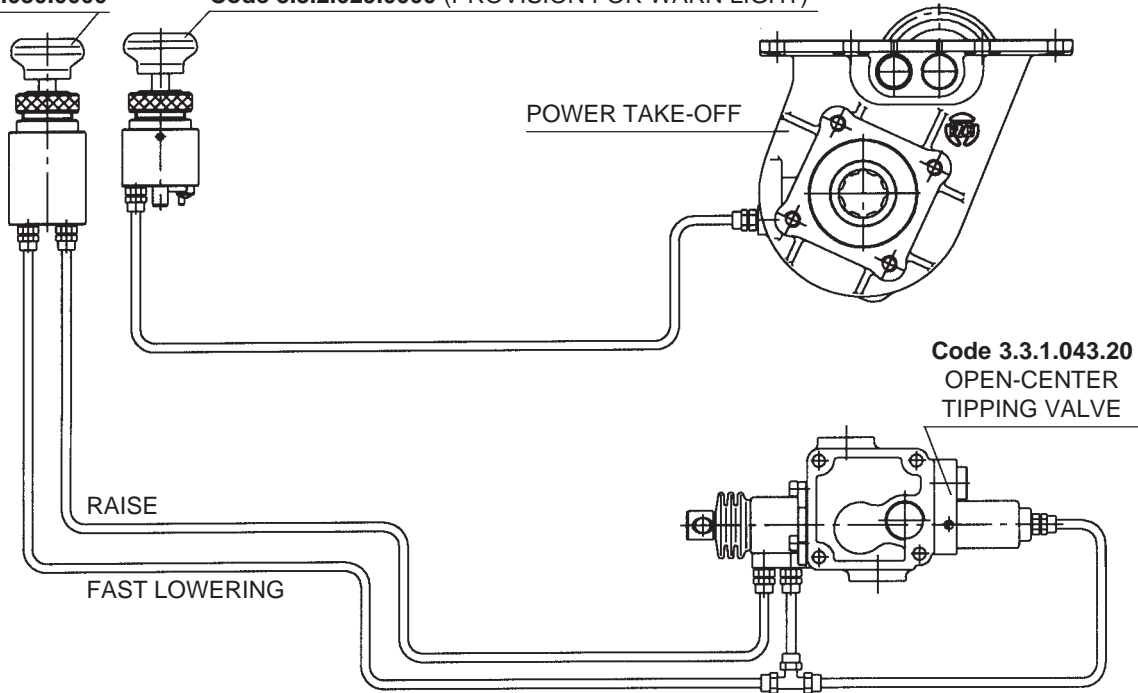
Push the knob and twist anticlockwise to release to OFF.

# AIRSWITCH CONNECTIONS FOR TIPPER TRUCK OR TRACTOR SYSTEM WITH "OPEN CENTER" TIPPING VALVE CE DIRECTIVE

## PTO - RAISE - FAST LOWERING

Code 3.3.2.030.0000

Code 3.3.2.028.0000 (NO WARN LIGHT)  
Code 3.3.2.029.0000 (PROVISION FOR WARN LIGHT)



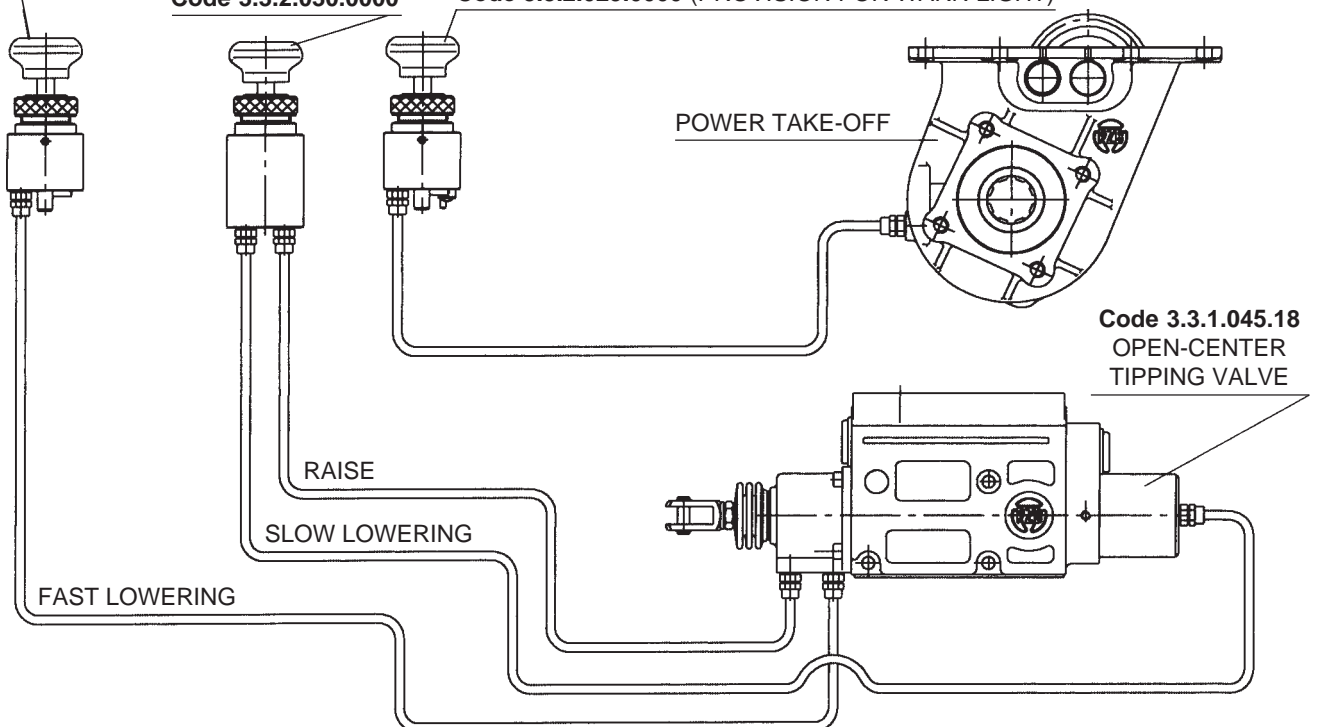
WITH 3.3.2.029.0000 AIRSWITCH  
**USE WARN LIGHT**  
PART No 0.99.00.084.00

## PTO - RAISE - SLOW / FAST LOWERING

Code 3.3.2.027.0000

Code 3.3.2.030.0000

Code 3.3.2.028.0000 (NO WARN LIGHT)  
Code 3.3.2.029.0000 (PROVISION FOR WARN LIGHT)

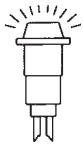
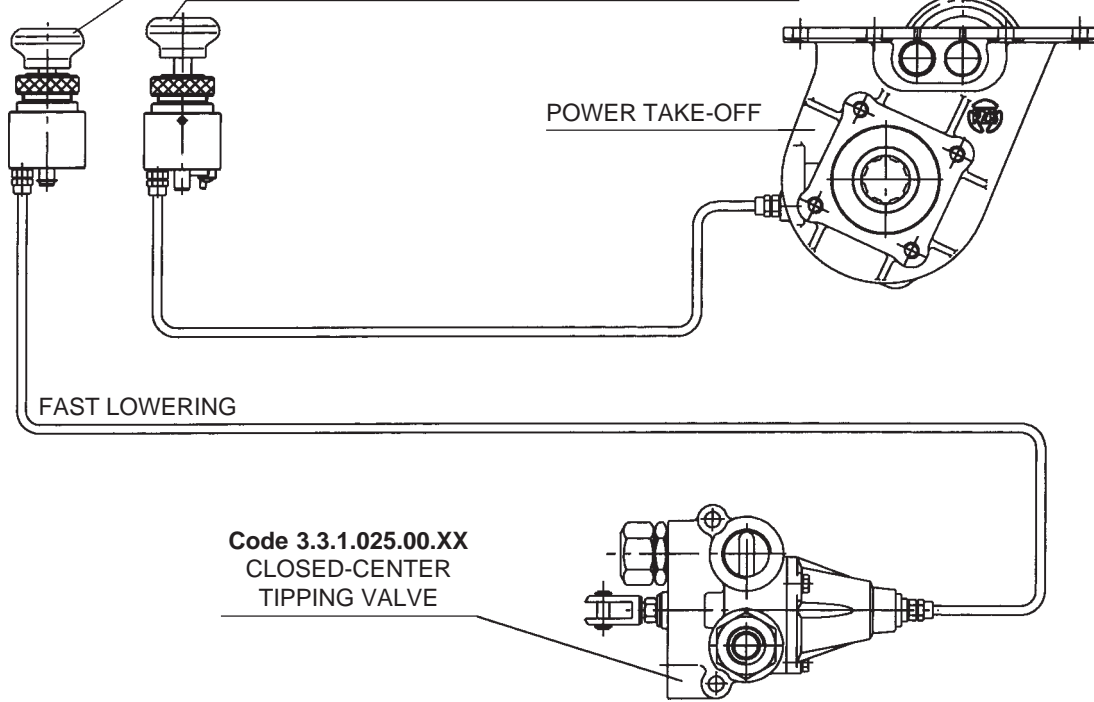


# AIRSWITCH CONNECTIONS FOR TIPPER TRUCK OR TRACTOR SYSTEM WITH "CLOSED CENTER" TIPPING VALVE

## PTO - RAISE - FAST LOWERING

- Code 3.3.2.025.0000 (NO WARN LIGHT)
- Code 3.3.2.026.0000 (PROVISION FOR WARN LIGHT)
- Code 3.3.2.028.0000 (NO WARN LIGHT)
- Code 3.3.2.029.0000 (PROVISION FOR WARN LIGHT)

Code 3.3.2.025.0000



WITH 3.3.2.026.0000 AND 3.3.2.029.0000 AIRSWITCH  
**USE WARN LIGHT**  
**PART No 0.99.00.084.00**

## PTO - RAISE - SLOW / FAST LOWERING

- Code 3.3.2.025.0000 (NO WARN LIGHT)
- Code 3.3.2.026.0000 (PROVISION FOR WARN LIGHT)
- Code 3.3.2.028.0000 (NO WARN LIGHT)
- Code 3.3.2.029.0000 (PROVISION FOR WARN LIGHT)

Code 3.3.2.030.0000

