

AIR CONTROL VALVE WITH VARIABLE DESCENT SPEED TWO-WAY

3.3.2.041

THREE-WAY

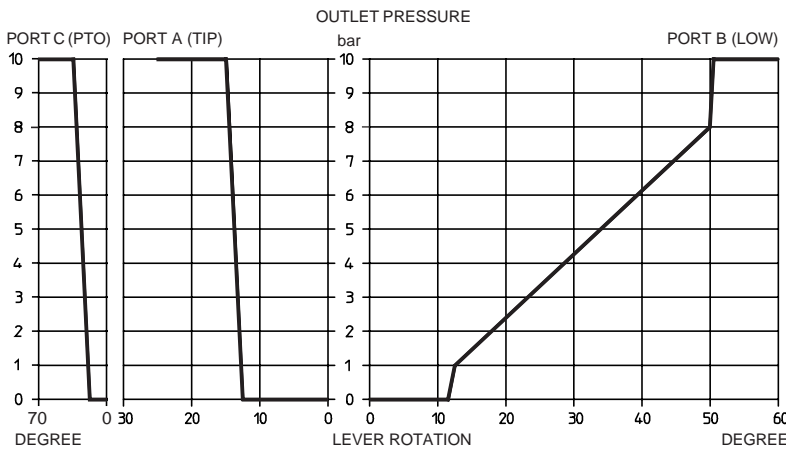
3.3.2.042



TECHNICAL SPECIFICATION

Working pressure	=	max. 12 bar
Operative temperature	=	da -40° a +80° C
Nominal diameter	=	ø 4 mm
Operating voltage	=	12 ÷ 24 V cc
Contacts	=	normally open

OUTLET PRESSURE



3.3.2.XXX.XX.00

BASIC SERIAL NUMBER _____

TYPE _____

041.18 = TWO-WAY RAISING AND LOWERING WITH SPRING RETURN TO NEUTRAL

041.30 = TWO-WAY RAISING AND LOWERING WITH LOCK IN "FAST LOWERING" POSITION

041.50 = TWO-WAY WITH LOCK IN THREE POSITIONS (HOLD/TIP/LOW)

042.21 = THREE-WAY RAISING, LOWERING, WITH SPRING RETURN TO NEUTRAL AND PTO CONTROL

042.22 = THREE-WAY RAISING, LOWERING AND PTO CONTROL, WITH SPRING RETURN TO NEUTRAL AND AUTOMATIC PTO DISENGAGEMENT

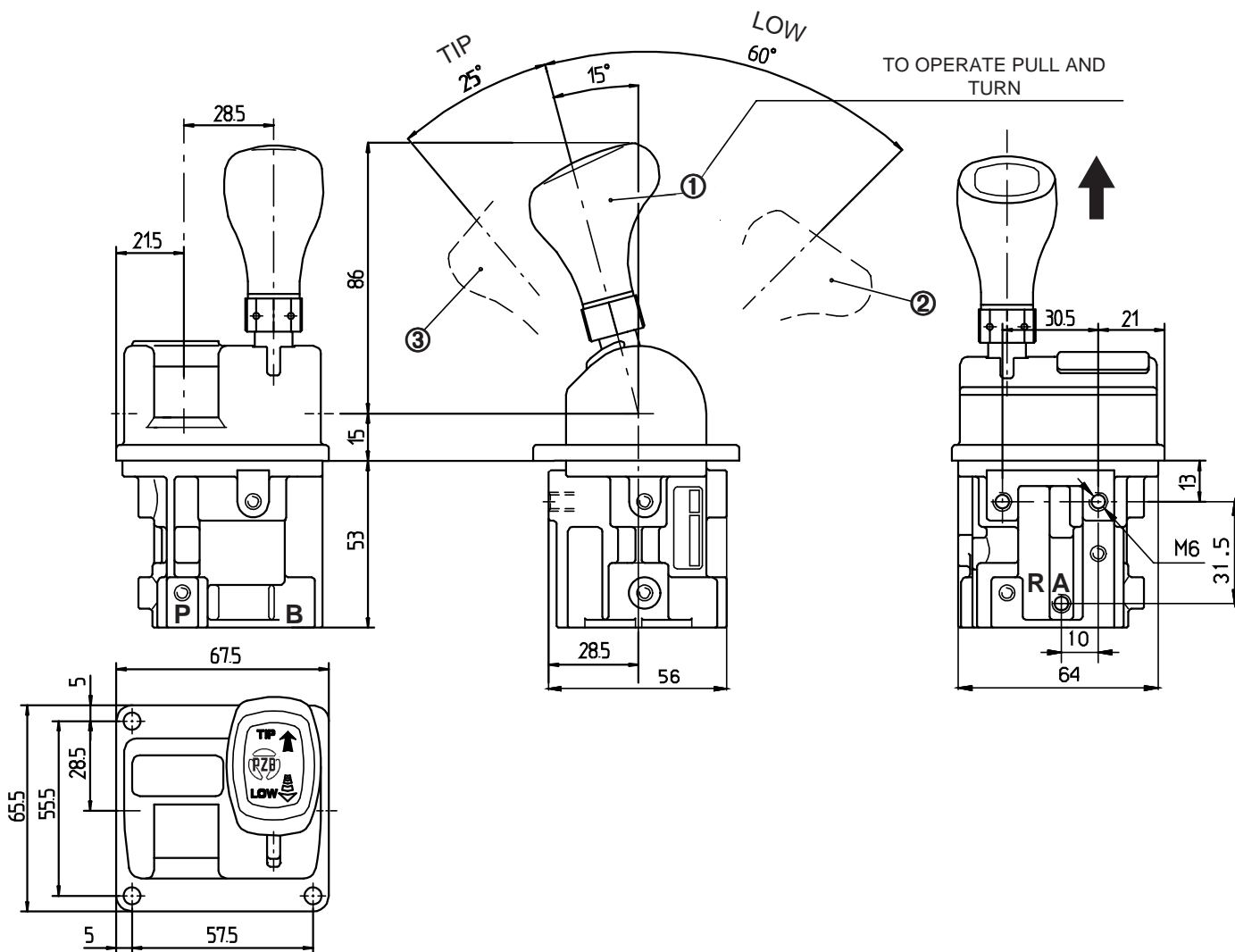
042.30 = THREE-WAY RAISING, LOWERING, WITH LOCK IN "FAST LOWERING" POSITION AND PTO CONTROL

042.31 = THREE-WAY RAISING, LOWERING, WITH AUTOMATIC PTO DISENGAGEMENT AND LOCK IN "FAST LOWERING" POSITION AND PTO CONTROL

042.50 = THREE-WAY WITH LOCK IN THREE POSITIONS (HOLD/TIP/LOW)

042.51 = THREE-WAY WITH LOCK IN THREE POSITIONS (HOLD/TIP/LOW) AND AUTOMATIC PTO DISENGAGEMENT

CODE 3.3.2.041 - 2-WAY

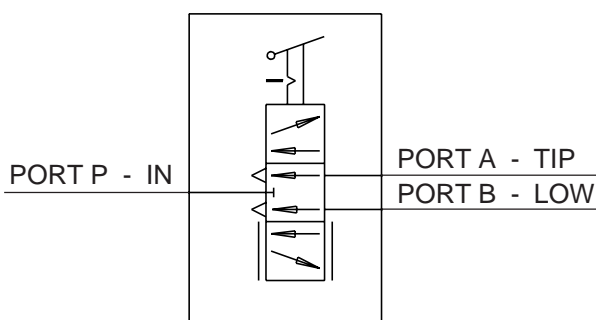


LEVER POSITION

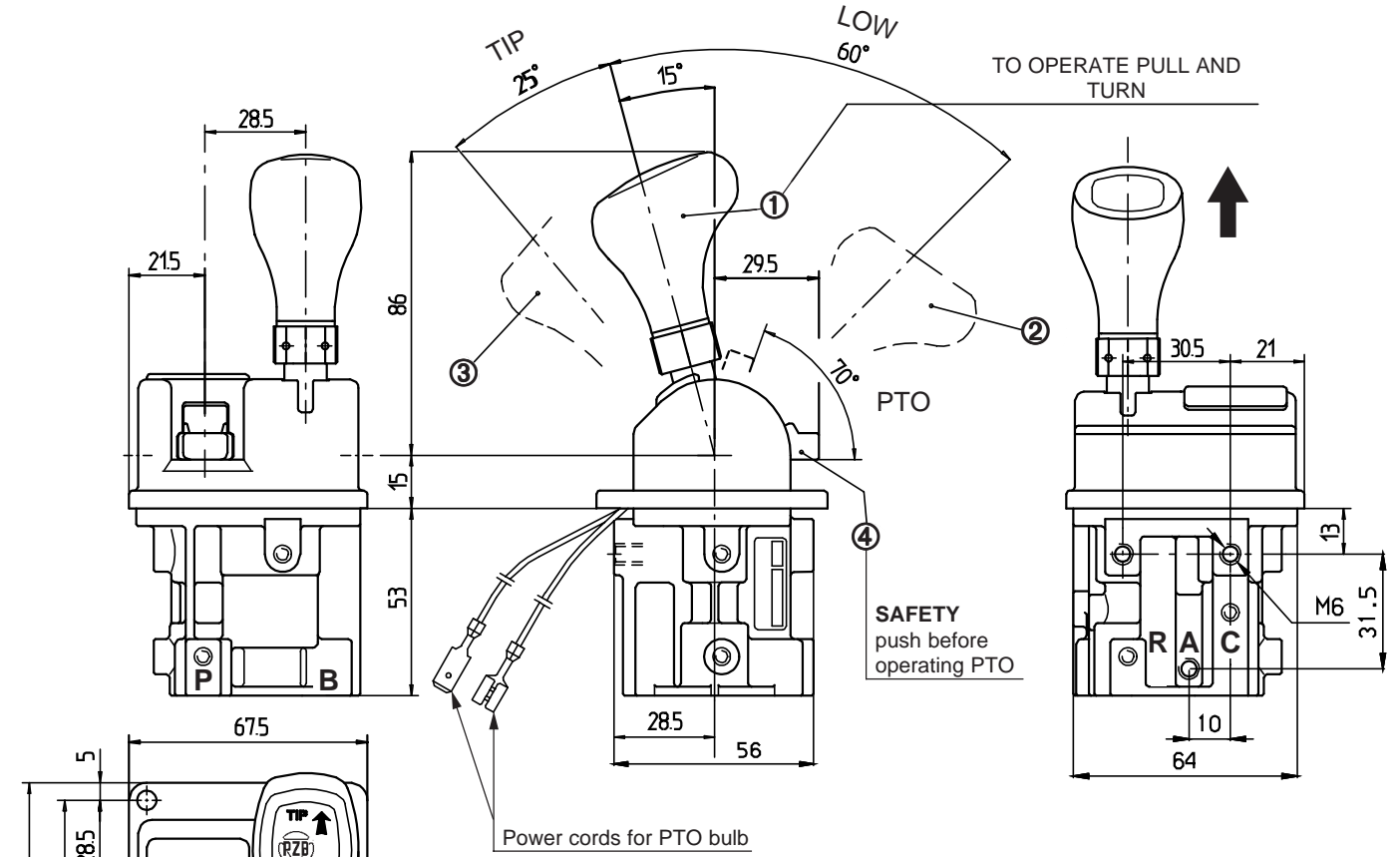
- ① = hold
- ② = operation PORT B
- ③ = operation PORT A

- PORT A = control tipping (TIP) G1/8"
- PORT B = control lowering (LOW) G1/8"
- PORT P = compressed air supply (IN) G1/8"
- PORT R = free exhaust (EX) M5

TIGHTENING TORQUE FOR CONNECTING
THREAD G1/8" 1.4 - 1.6 daNm



CODE 3.3.2.042 - 3-WAY



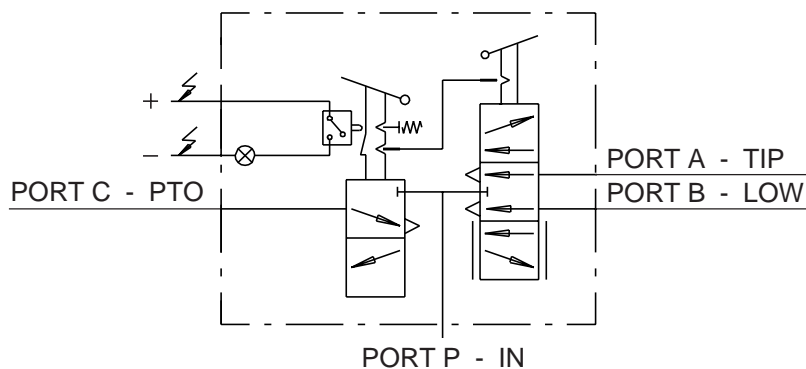
NB - when operating the lever in the lowering position, the PTO switch will automatically disengaged, except for the code 3.3.2.042.21 - 3.3.2.042.30 - 3.3.2.042.50.

LEVER POSITION

- ① = hold
- ② = operation PORT B
- ③ = operation PORT A
- ④ = operation PORT C (with stop)

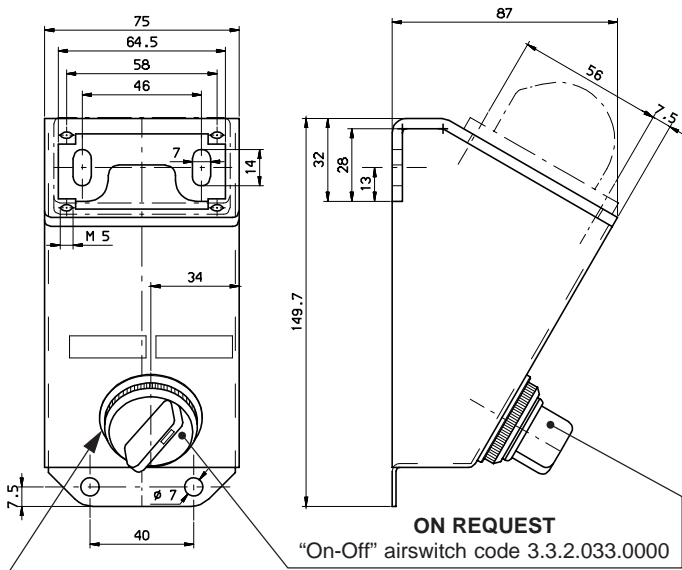
- PORT A = control tipping (TIP) G1/8"
- PORT B = control lowering (LOW) G1/8"
- PORT C = engagement power take-off (PTO) G1/8"
- PORT P = compressed air supply (IN) G1/8"
- PORT R = free exhaust (EX) M5

TIGHTENING TORQUE FOR CONNECTING
THREAD G1/8" 1.4 - 1.6 daNm



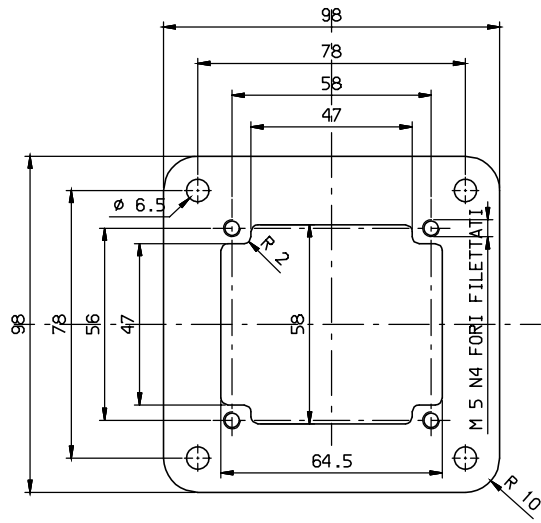
AIR CONTROL MOUNTING BRACKETS

BOX CODE 2.05.550.0000

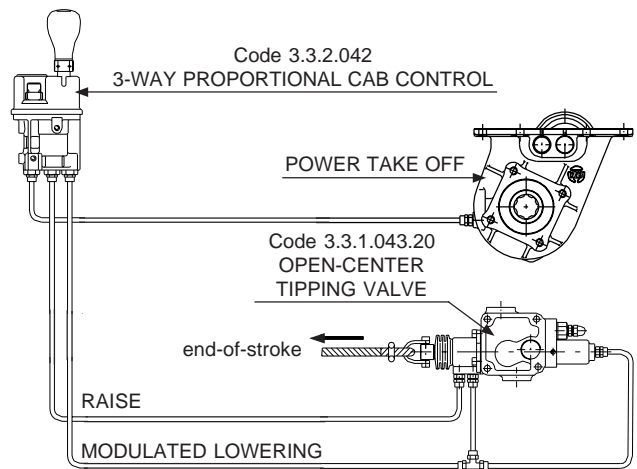
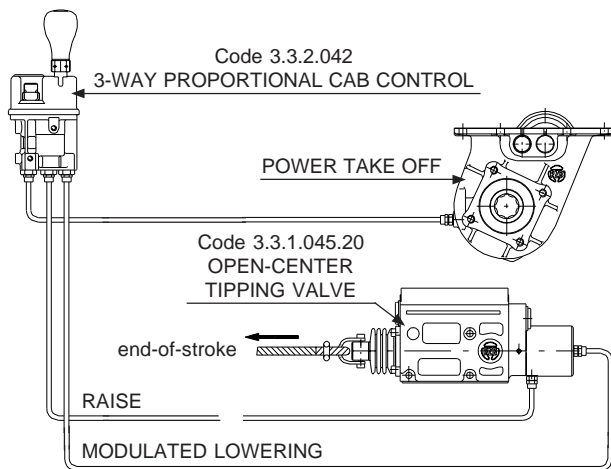


BREAKING THE APPOSITE CIRCULAR BAFFLE PLATE AND LOWERING THE TAB IT'S POSSIBLE TO PUT ONE ADDICIONAL PNEUMATIC CONTROL (TRACTOR / TRAILER)

BRACKET CODE 2.05.551.0000



AIR SYSTEM WITH OPEN-CENTER TIPPING VALVE AND THREE-WAY PROPORTIONAL CAB CONTROL



WITH PNEUMATIC END-OF-STROKE

