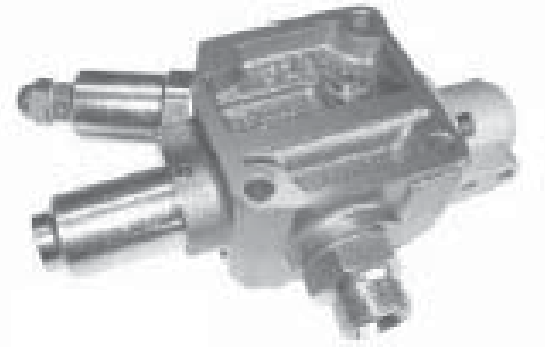
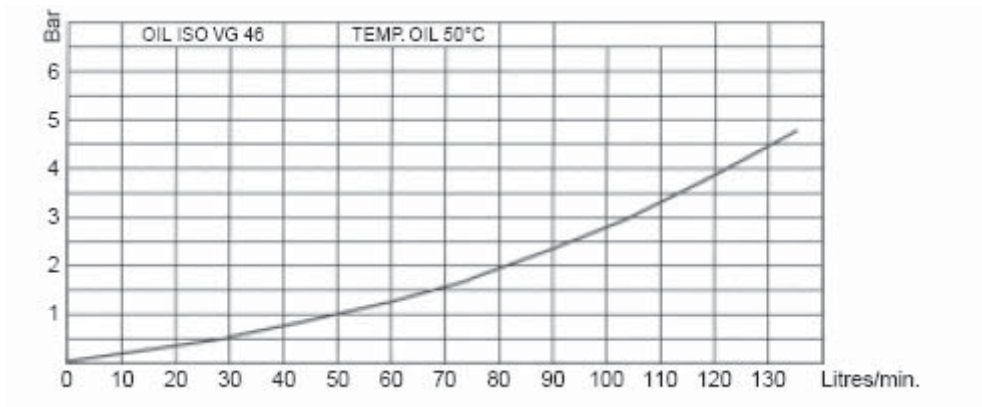


## DP 22 OPEN-CENTER TIPPING VALVE

# 3.3.1.044.



- ✓ **Air operated, open center valve** for raising and lowering the tipping body.
- ✓ Used with **332022 and 33204X** air controls. It features proportional descent speed and complies with the safety requirements of the **CE Machinery Directive**.



Three way (pump, cylinder, tank) air operated control valve. Three positions:

- Hold / Tipping / Lowering

Three modes of descent:

- One speed only.

- Two speeds (fast and slow).

- Variable descent speed with suitable air control.

Relief valve setting up to 350 Bar with built-in check valve.

Air pressure 4,5 - 12 Bar.

Flow Pump to Cylinder = 130 litres/min.

Flow Cylinder to Tank = 110 litres/min.

WEIGHT: kg 4

**3.3.1.044.XX.XX**

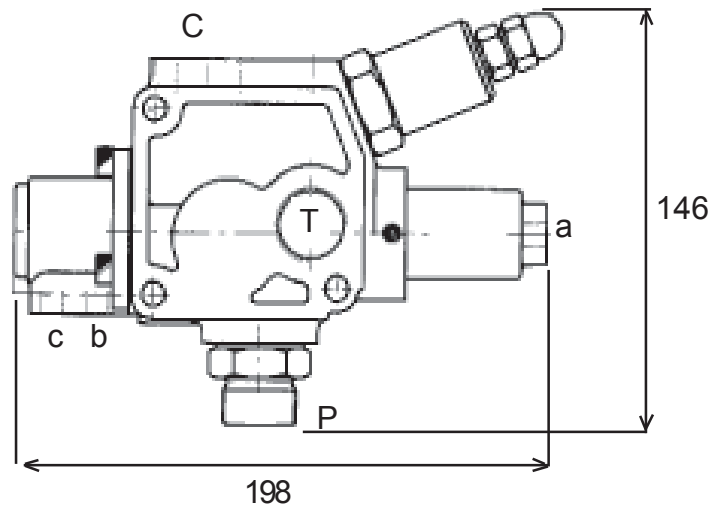
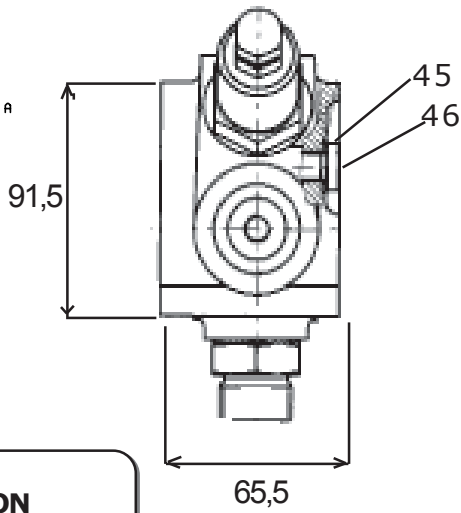
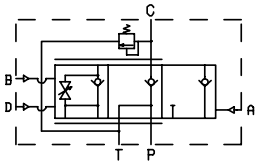
BASIC SERIAL NUMBER \_\_\_\_\_

RELIEF VALVE PRESSURE SETTING (Bar x 10)

VERSION \_\_\_\_\_

**10** = AIR OPERATED

**CODE 3.3.1.044.10**

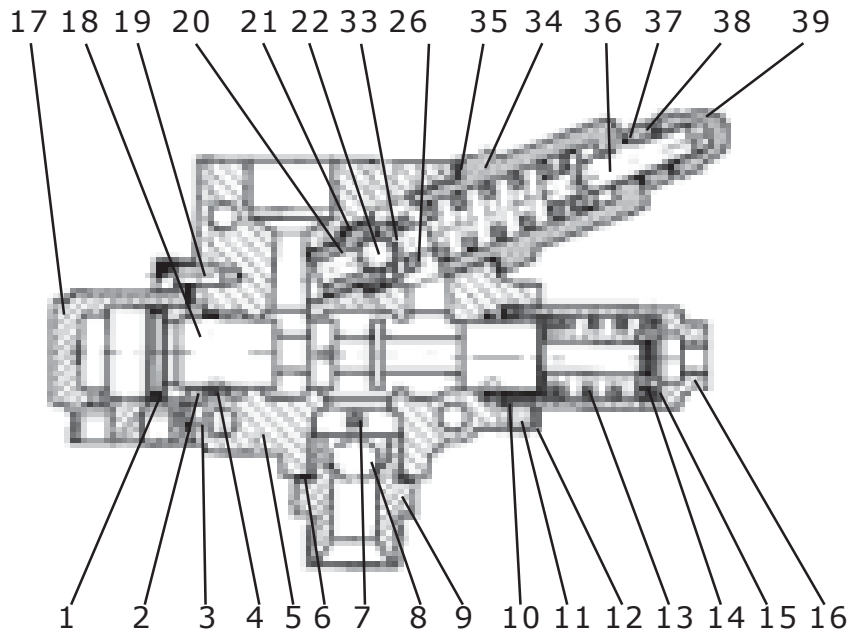


**ATTENTION**

Mount on a flat surface and tighten the three M8 screws to 2 kgm torque.

**PORTS**

- a = 1/8" GAS - a+b Fast lower
- b = 1/8" GAS - Slow lower
- c = 1/8" GAS - Raise
- P = 3/4" BSPP - Pump
- C = 3/4" BSPP - Cylinder
- T = 3/4" BSPP - Tank



REF.	CODE	DESCRIPTION	QT.
1	0.08.02.099.00	O-ring OR3100	1
2	1.27.02.163.00	Centering ring	1
3	0.08.02.024.00	O-ring OR3137	1
4	0.08.02.083.00	O-ring OR3087	2
5	1.06.01.047.00	Housing	1
6	0.04.01.120.00	Sealing washer DW34	1
7	0.06.01.021.00	Retaining pin	1
8	0.11.01.012.00	Ball 17/32"	1
9	1.10.02.092.00	Inlet fitting	1
10	0.08.02.063.00	O-ring OR3106	1
11	0.01.05.035.00	Screw M5x8	2
12	1.26.01.134.00	Spacer	1
13	1.28.01.126.00	Spring	1
14	1.20.07.007.00	Spring retainer cap	1
15	0.07.04.010.00	Spring washer	1
16	1.24.01.081.00	Spring end cap	1
17	1.08.02.031.00	Air cylinder cap	1
18	1.15.00.101.00	Spool DP22	1
19	0.01.03.001.00	Screw M6x14	3
20	1.25.02.061.00	Relief seat	1
21	0.08.02.007.00	O-ring OR3068	1

REF.	CODE	DESCRIPTION	QT.
22	0.11.01.003.00	Ball 13/32"	1
26	1.28.01.124.00	Relief Spring 100-200 bar	1
	1.28.01.125.00	Relief Spring 201-350 bar	1
33	1.27.02.162.00	Relief ball cap and spring guide	2
34	1.30.03.061.00	Relief valve body	1
35	0.04.01.176.00	Copper washer	1
36	0.01.05.055.00	Relief adjustment screw M10x35	1
37	0.04.01.010.00	Copper washer	3
38	0.03.01.021.00	Nut M10	1
39	0.03.03.004.00	Dome nut M10	1
45	0.04.01.010.00	Copper Washer	1
46	0.12.01.059.00	Plug 1/8"G	1