

### 3 GEAR SAE 6 BOLT POWER TAKE-OFF

## 4.2.15.6.

FOR GEARBOX :  
FULLER



Technical data: refer to transmission application manual.

OUTPUT TORQUE:

25 kgm. (increase of 50% for intermittent service).

WEIGHT: kg. 10,2

#### 4.2.15.6.1.XX.0.X

BASIC SERIAL NUMBER \_\_\_\_\_

OUTPUT SHAFT OPTION \_\_\_\_\_

COMPANION FLANGE FOR REMOTE TRANSMISSION

**0** = NO OPTION

**1** = SPICER 1120 CODE 2.05.054.0000

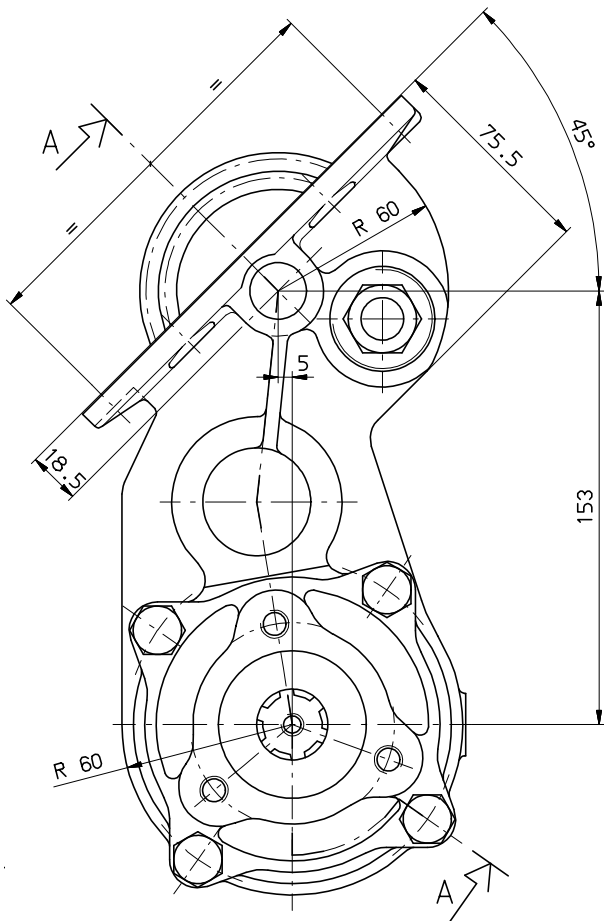
**2** = SPICER 1300 CODE 2.05.055.0000

**3** = DIN 00 CODE 2.05.056.0000

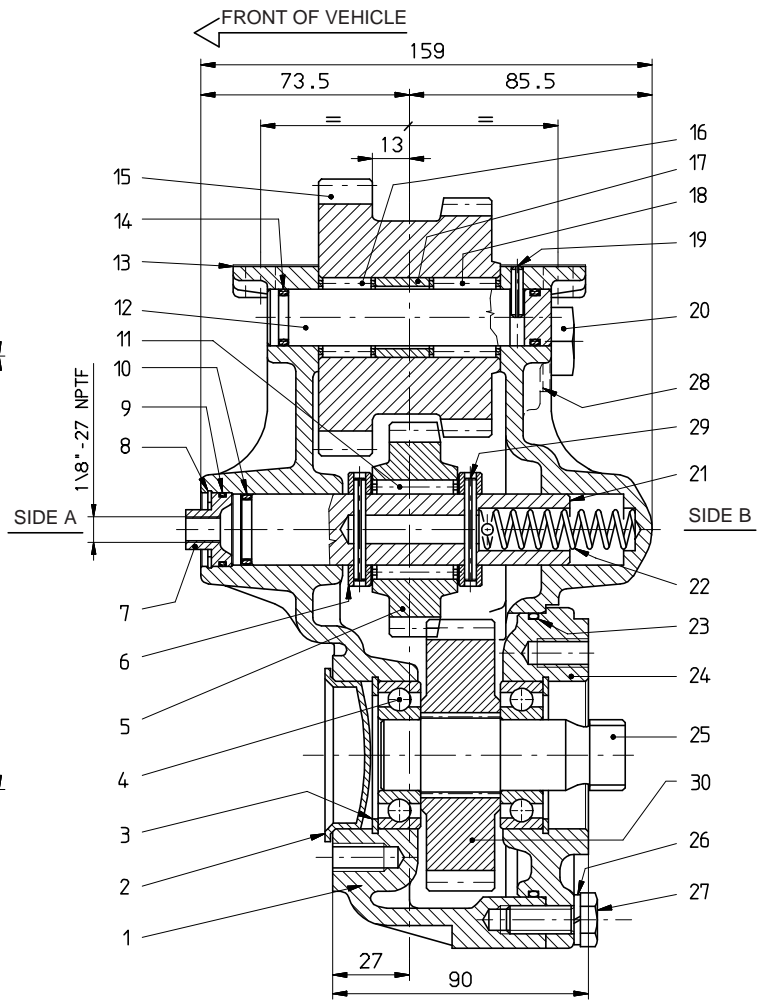
**6** = DIN 10 CODE 2.05.077.0000

#### OUTPUT SHAFT OPTION

DESCRIPTION	CODE	
	SIDE A	SIDE B
For remote transmission (see chart X group A)	<b>01</b>	<b>02</b>
Direct mounting PZB pumps-3 bolt mtg. flange (see chart Y type A)	<b>03</b>	<b>04</b>



REAR VIEW



SECTION A-A

REF.	CODE	DESCRIPTION	QT.
1	1.01.03.058.00	Housing	1
2	0.12.01.044.00	Plug 52x7	1
3	0.07.02.004.00	Circlip 52i UNI 7437	2
4	0.10.01.001.00	Bearing 6205	2
5	1.11.01.090.00	Gear 21 T	1
6	1.27.02.102.00	Ring	2
7	1.24.01.067.00	Cover	1
8	0.07.02.034.00	Circlip 26i UNI 7437	1
9	0.08.02.067.00	O-Ring OR 2087	1
10	0.08.02.014.00	O-Ring OR 3081	1
11	0.10.06.007.00	Needle cage K25x35x30	1
12	1.14.01.043.00	Shaft	1
13	1.29.01.001.00	Gasket PTO/gearbox SAE 6 bolt/metr. 0,5	1
14	0.08.02.003.00	O-Ring OR 119	2
15	1.11.02.049.00	Gear 22/27 T	1
16	0.10.06.003.00	Needle cage K20x28x20	1
17	1.26.01.054.00	Spacer	1
18	0.10.06.004.00	Needle cage K20x28x25	1
19	0.05.02.001.00	Roll pin 4x18 UNI 6873	1
20	0.12.01.074.00	Plug 1" Gas	1
21	1.14.01.061.00	Shaft	1
22	1.28.01.071.00	Coil spring	1
23	0.08.02.105.00	O-Ring OR 3375	1
24	1.07.01.111.00	Flange	1
25	1.13.01.177.00	Shaft	1
26	0.04.02.003.00	Lockwasher 10,5 UNI 1751	4
27	0.01.01.004.00	Capscrew TE M10x25 UNI 5739 CL RES 8.8	4
28	0.08.99.005.00	Gasket 1"	1
29	0.05.02.026.00	Roll pin 4x40 UNI 6875	2
30	1.11.03.119.00	Gear 29 T	1