

POWER TAKE-OFF 3.2.98.1.

FOR GEARBOX :
ZF 5S200 (5 gears)

POWER TAKE-OFF 3.2.98.2.

FOR GEARBOX :
ZF 6S300 (6 gears)

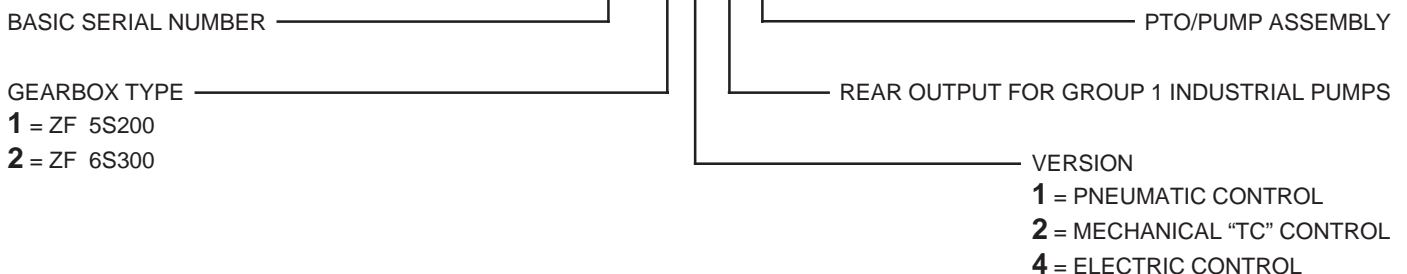


Technical data: refer to transmission application manual.
POWER TAKE-OFF SPECIFICATIONS:

- Power take-off with 5 cm³ pump.
- 1.983 PTO rpm at 1000 engine rpm (for 5S200 gearboxes)
- 2.026 PTO rpm at 1000 engine rpm (for 6S300 gearboxes)
- 180 bar max. pressure

WEIGHT: kg. 5,5

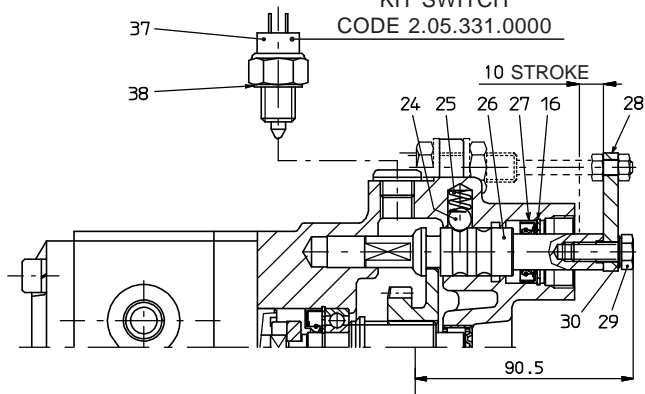
3.2.98.X.X.09.1.0



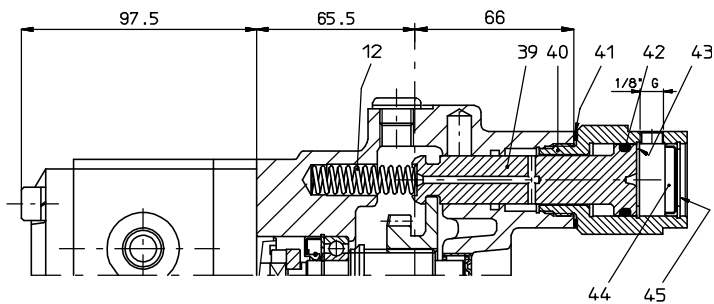
OPTIONAL

KIT SWITCH

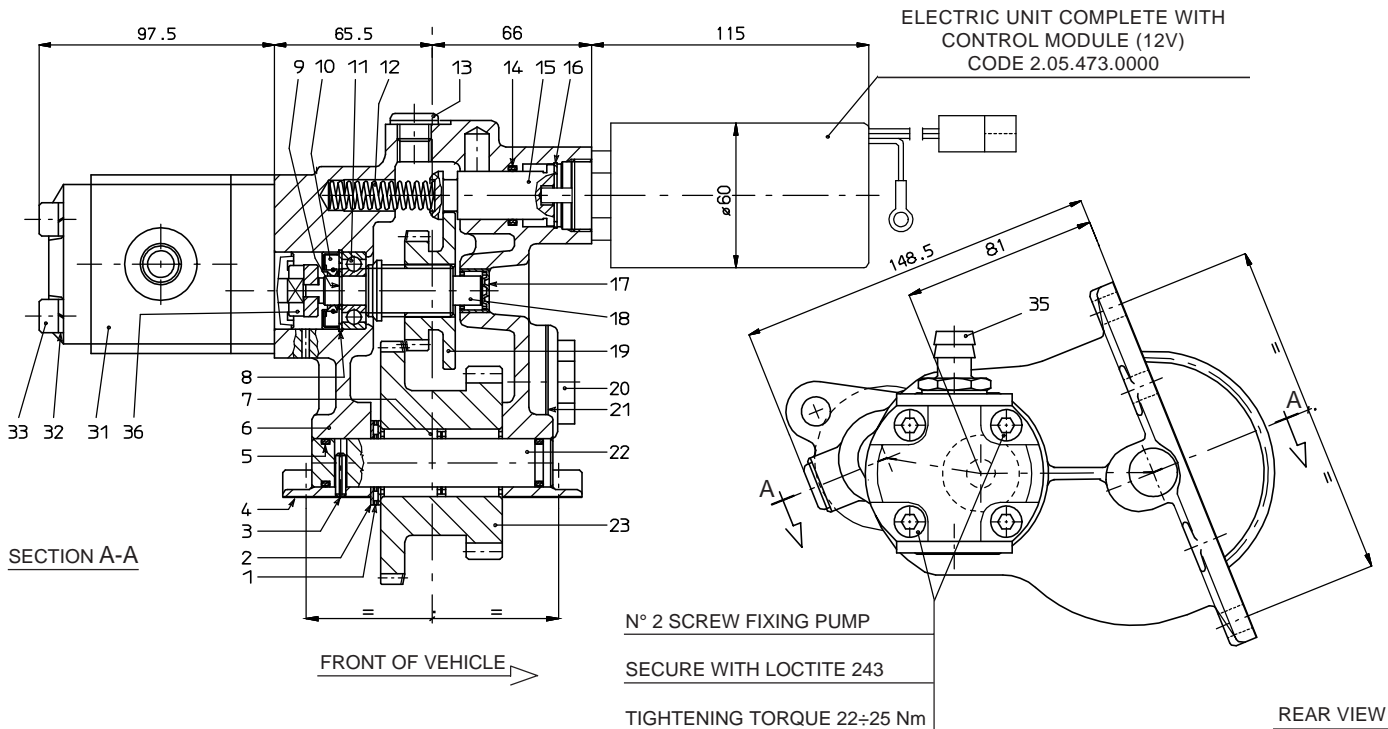
CODE 2.05.331.0000



DETAIL MECHANICAL SHIFTING



DETAIL PNEUMATIC SHIFTING



SECTION A-A

FRONT OF VEHICLE →

N° 2 SCREW FIXING PUMP

SECURE WITH LOCTITE 243

TIGHTENING TORQUE 22÷25 Nm

REAR VIEW

REF.	CODE	DESCRIPTION	QT.
1	0.10.10.002.00	Needle cage ANK 2035	1
2	0.10.11.001.00	Bearing disc AS 2035	2
3	0.05.02.001.00	Roll pin 4x18 UNI 6873	1
4	1.29.01.001.00	Gasket PTO/gearbox SAE 6-bolt/metr.0,5	1
5	0.08.02.003.00	O-Ring OR 119	2
6	1.01.02.138.00	Housing	1
7	0.10.06.004.00	Needle cage K20x28x25	2
8	0.07.02.030.00	Circlip 32i 7437	1
9	0.07.01.025.00	Circlip 12e UNI 7435	1
10	0.08.01.089.00	Seal 12x32x7	1
11	0.10.01.051.00	Bearing 6201	1
12	1.28.01.120.00	Coil spring (PTO 3.2.98.X.1 - 3.2.98.X.4)	1
13	0.12.01.061.00	Oil plug with gasket TCNB 1415	1
14	0.08.02.014.00	O-Ring OR 3081 (PTO 3.2.98.X.4)	1
15	1.14.03.088.00	Shaft (PTO 3.2.98.X.4)	1
16	0.07.02.034.00	Circlip 26i UNI 7437	1
17	0.10.07.014.00	Needle cage BK 12/12	1
18	1.13.01.170.00	Shaft	1
19	1.11.07.165.00	Gear 22 T (PTO 3.2.98.1)	1
	1.11.07.166.00	Gear 18 T (PTO 3.2.98.2)	
20	0.12.01.074.00	Retainer 1" Gas	1
21	0.08.99.005.00	Gasket 1"	1
22	1.14.01.043.00	Shaft	1

REF.	CODE	DESCRIPTION	QT.
23	1.11.02.155.00	Gear 28/47 T (PTO 3.2.98.1)	1
	1.11.02.156.00	Gear 28/51 T (PTO 3.2.98.2)	
24	0.11.01.002.00	Ball 3/8"	1
25	1.28.01.003.00	Coil spring mod.15/2	1
26	1.14.03.092.00	Shaft	1
27	0.08.01.004.00	Seal 15x26x7	1
28	1.00.08.038.00	Extention	1
29	0.01.01.001.00	Screw TE M8x20 UNI 5739 CL RES 8.8	1
30	0.04.04.003.00	Washer Schnorr 8	1
31	0.00.09.003.00	Gear pump 5 lt.	1
32	0.04.02.002.00	Lockwasher 8,4 UNI 1751	2
33	0.01.03.033.00	Capscrew TCEI M8x100 UNI 5931 CL RES 8.8	2
35	0.13.00.056.00	Nipple G1/2"	1
36	1.17.03.019.00	Joint	1
OPTIONAL: KIT SWITCH 2.05.331.0000			
37	0.99.00.160.00	Indicator switch	1
38	0.04.01.108.00	Washer 14,5x20x0,5	1
39	1.14.03.093.00	Cylindrical shaft	1
40	1.08.02.026.00	Cylinder	1
41	0.04.1.119.00	Washer 1"	1
42	0.08.02.049.00	O-Ring OR 409	1
43	0.07.02.031.00	Circlip 30i UNI 7437	1
44	0.12.01.099.00	Plug	1
45	0.07.02.051.00	Circlip 30i UNI 7437	1