

POWER TAKE-OFF

3.2.81.3.1



FOR GEARBOX :

- MITSUBISHI M8S2x5 - 10,060
- M8S5 - 7,814
- M8S6 - 7,814
- M8S6 - 10,060
- M10S5 - 5,431

Technical data: refer to transmission application manual.
OUTPUT TORQUE:
 25 kgm. (increase of 50% for intermittent service).

WEIGHT: kg. 8,5

3.2.81.3.1.XX.0.X

BASIC SERIAL NUMBER

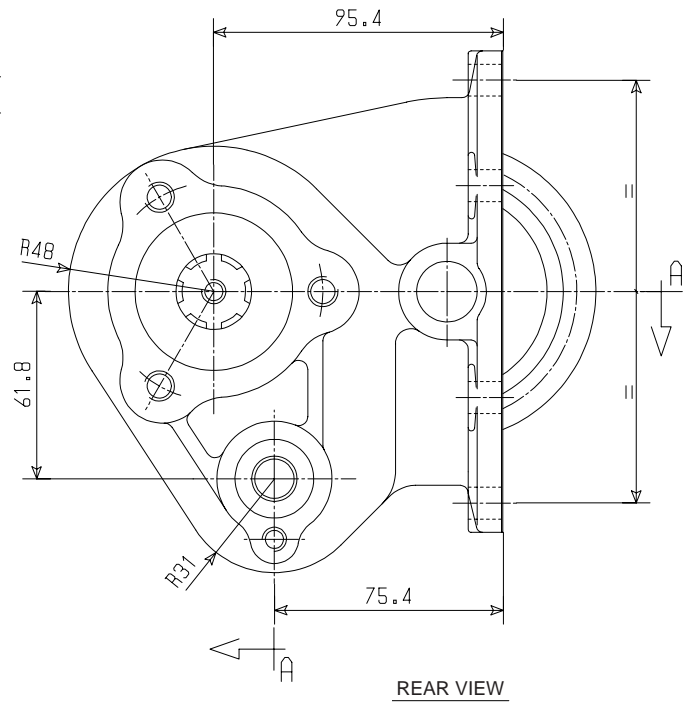
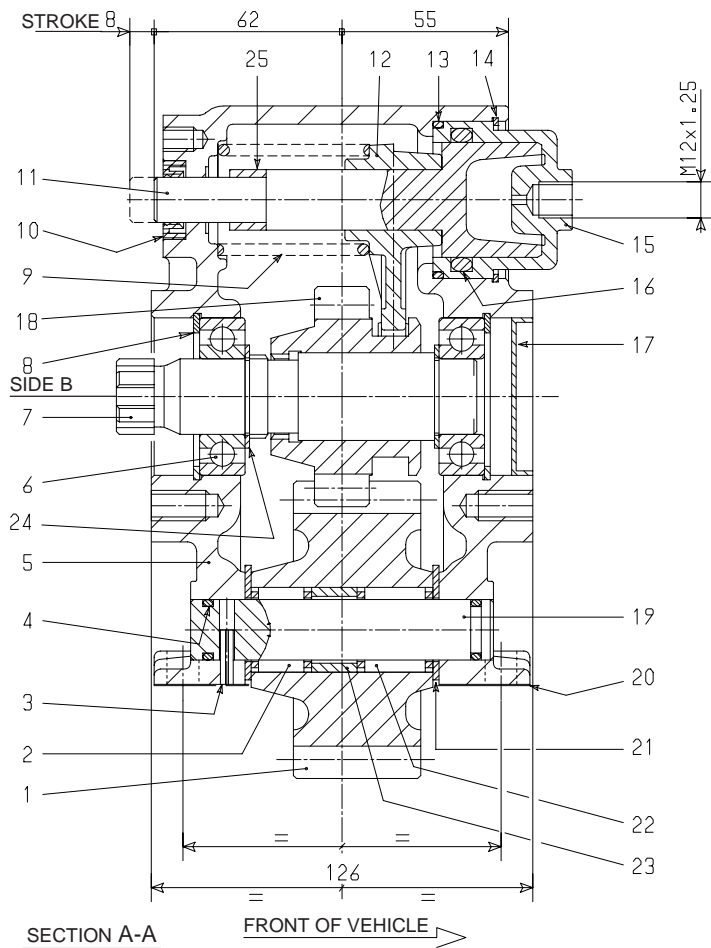
OUTPUT SHAFT OPTION

COMPANION FLANGE FOR REMOTE TRANSMISSION

- 0** = NO OPTION
- 1** = SPICER 1120 CODE 2.05.054.0000
- 2** = SPICER 1300 CODE 2.05.055.0000
- 3** = DIN 00 CODE 2.05.056.0000
- 6** = DIN 10 CODE 2.05.077.0000

OUTPUT SHAFT OPTION

DESCRIPTION	CODE
For remote transmission (see chart X group A)	02
Direct mounting PZB pumps-3 bolt mtg. flange (see chart Y type A)	04



REF.	CODE	DESCRIPTION	QT.
1	1.11.01.133.00	Gear 17 T	1
2	0.10.06.003.00	Needle cage K20x28x20	1
3	0.05.02.001.00	Roll pin 4x18 UNI 6873	1
4	0.08.02.003.00	O-Ring OR 119	2
5	1.01.02.057.00	Housing	1
6	0.10.01.001.00	Bearing 6205	2
7	1.13.01.132.00	Shaft	1
8	0.07.02.004.00	Circlip 52i UNI 7437	2
9	1.28.01.002.00	Coil spring 216/3	1
10	0.08.01.004.00	Seal 15x26x7	1
11	1.21.01.002.00	Piston 218B/4	1
12	1.22.01.030.00	Fork	1
13	0.08.02.056.00	O-Ring OR 3187	1
14	0.07.05.002.00	Circlip SB52	1
15	1.08.01.001.00	Cylinder 218B/5	1
16	0.08.02.010.00	O-Ring OR 6150	1
17	0.12.01.044.00	Plug 52x7	1
18	1.11.07.148.00	Gear 12 T	1
19	1.14.01.043.00	Shaft	1
20	1.29.01.001.00	Gasket PTO/gearbox SAE 6 bolt/metr.0,5	1
21	1.27.01.036.00	Washer 43x20,2x2	2
22	0.10.06.004.00	Needle cage K20x28x25	1
23	1.26.01.056.00	Spacer	1
24	1.26.01.107.00	Spacer	2
25	1.26.01.098.00	Spacer	1