



Technical data: refer to transmission application manual.

**OUTPUT TORQUE:**

35 kgm (30 kgm for ZF 6-36 gearbox - IVECO 2895.9 gearbox).

**WEIGHT:** kg. 9

**3.2.04.XX.0000**

BASIC SERIAL NUMBER

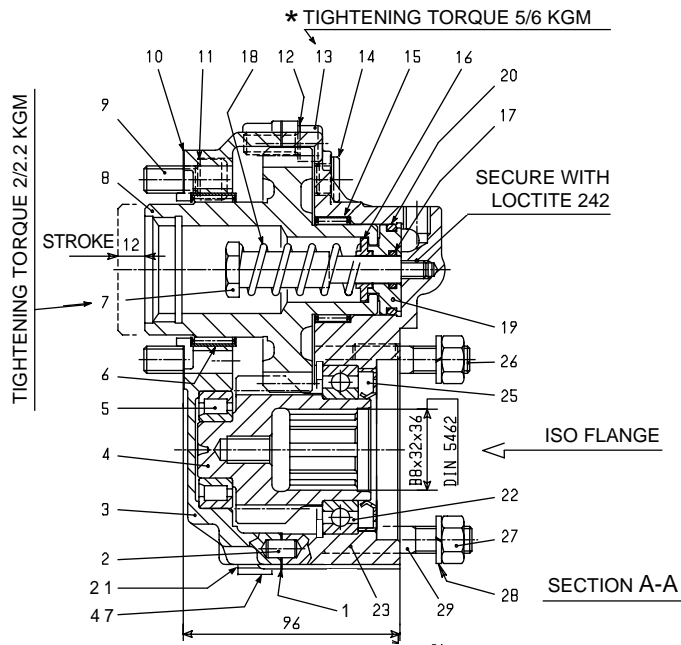
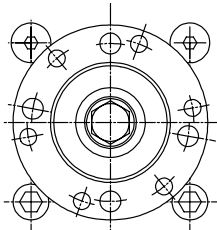
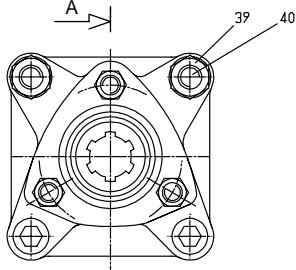
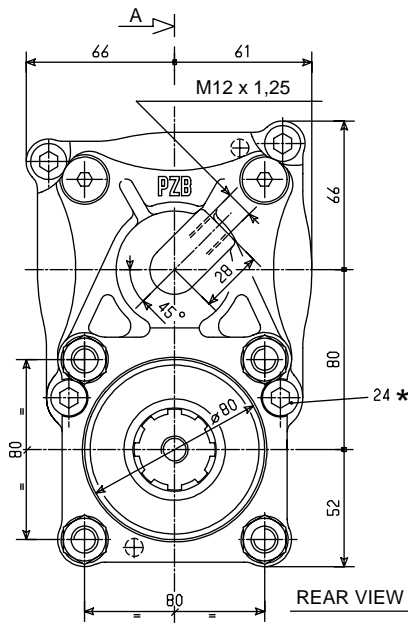
GEARBOX TYPE

- 10** = ZF 4-120, 4-150, 5-90, 5-92, 6-66, 6-90, 8S151 - FROM 16-112 TO 16-221 - EATON TWINSPLITTER
- 11** = ZF 5-50, 5-110, 5-111, 6-65, 6-80, 6-70, 6-75, 16S150 - 16S151 - 16S181 - 16-220 - 16S221 - 16S251
- 12** = ZF Serie ECOMID
- 13** = ZF 6-36, 6S850
- 14** = MERCEDES G/GV4
- 15** = VOLVO R/MR/SR61, 62
- 16** = EATON RTS/RTSO 12316A, 17316A - VOLVO R/SR70
- 17** = \* IVECO 2895.9 - EATON 6109
- 18** = MERCEDES G125, 135, 155, 180, 200, 210, 211, 240, 260
- 19** = VOLVO R1000, 1400, 1700 - SR1400, 1700, 1900, 2000 - SRO2400
- 20** = ZF AS-TRONIC
- 21** = MERCEDES G100
- 22** = ZF 16S151 - 16S221 IT AND GEARBOXES FITTED WITH EMERGENCY STEERING PUMP
- 23** = NEW MERCEDES ACTROS-AXOR FROM G210 TO G260

**OUTPUT SHAFT OPTION**

	DESCRIPTION	
For remote transmission DIN 10/SPICER 1300		<b>KIT 2.05.327.0000</b>
Direct mounting PZB pumps-3 bolt mtg. flange		<b>KIT 2.05.326.0000</b>
Direct mounting ISO 4 bolt mtg. flange pumps		<b>KIT 2.05.325.0000</b>

\* Use lubrication kit code 2.99.039.0000



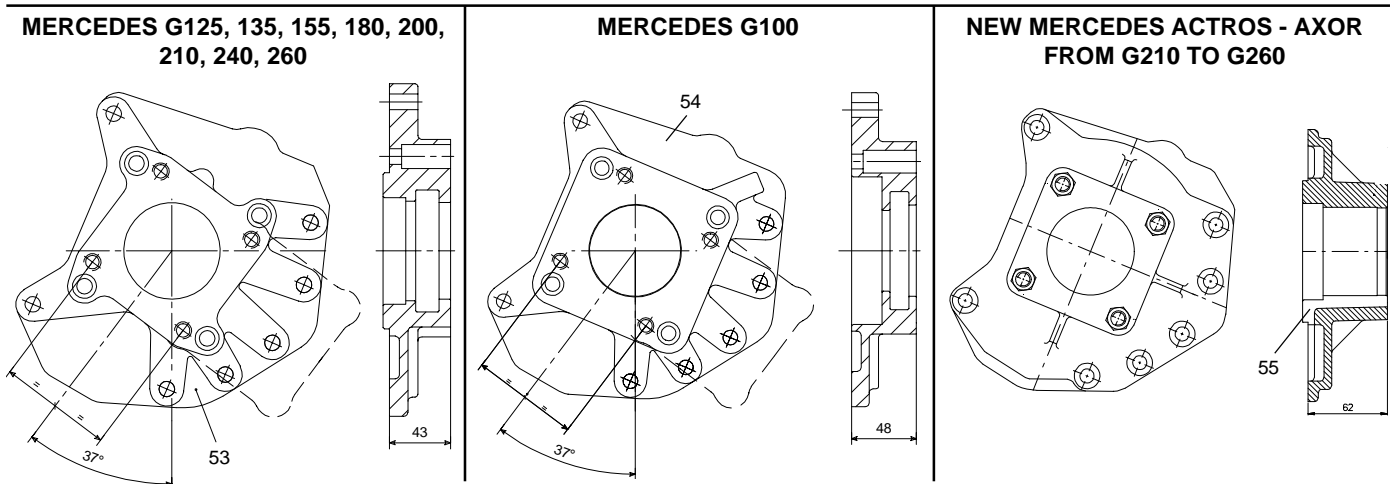
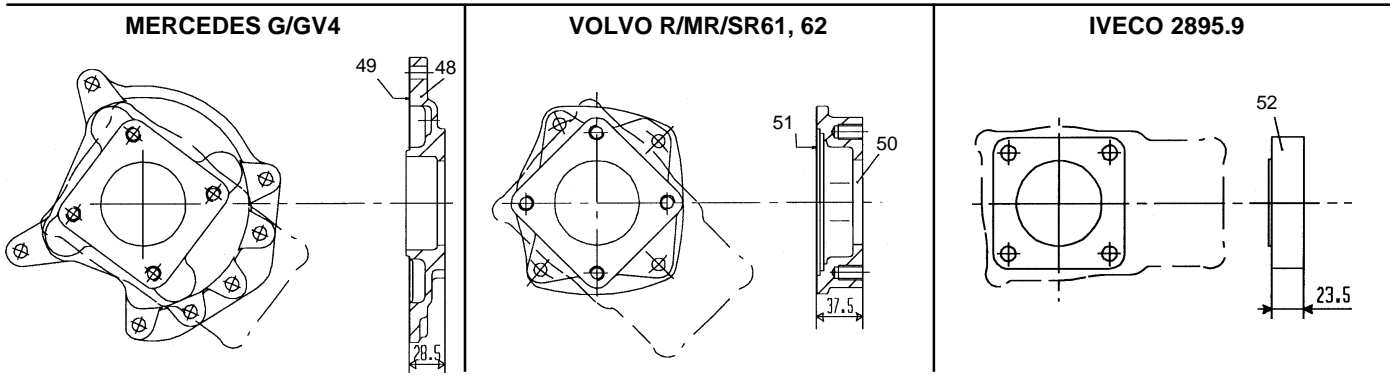
3 BOLT MTG. FLANGE

MTG. FLANGE

REF.	CODE	DESCRIPTION	QT.
1	1.29.01.123.00	Gasket	1
2	0.11.02.001.00	Pin 8x12	2
3	1.01.02.117.00	Front housing	1
	1.01.02.128.00	Front housing (PTO 3.2.04.17)	
4	1.11.10.098.00	Gear 14 T	1
5	0.10.03.012.00	Bearing NJ 205	1
6	0.10.07.009.00	Needle cage HK60/20	1
7	1.30.01.088.00	Screw	1
8	1.11.10.099.00	Gear 27 T (PTO 3.2.04.10-11-12-20-22)	1
	1.11.10.100.00	Gear 27 T (PTO 3.2.04.13-16-17)	
	1.11.10.101.00	Gear 27 T (PTO 3.2.04.14-18-21)	
	1.11.10.102.00	Gear 27 T (PTO 3.2.04.15)	
	1.11.10.117.00	Gear 27 T (PTO 3.2.04.19)	
	1.11.10.167.00	Gear 27 T (PTO 3.2.04.23)	
	0.01.03.062.00	Capscrew TCEI M12x25 UNI 5931 CL RES 8.8 (PTO 3.2.04.10-14-15-16-18-19-21-23)	
0.01.03.028.00	Capscrew TCEI M12x60 UNI 5931 CL RES 8.8 (PTO 3.2.04.11)		
0.01.03.008.00	Capscrew TCEI M12x35 UNI 5931 CL RES 8.8 (PTO 3.2.04.12)		
0.01.03.067.00	Capscrew TCEI M12x30 UNI 5931 CL RES 8.8 (PTO 3.2.04.13)		
0.01.03.075.00	Capscrew TCEI M12x50 UNI 5931 CL RES 8.8 (PTO 3.2.04.17-20)		
0.01.03.045.00	Capscrew TCEI M12x70 UNI 5931 CL RES 8.8 (PTO 3.2.04.22)		
10	1.29.01.014.00	Gasket PTO/gearbox	1
11	0.04.04.002.00	Washer Schnorr 12	4
12	0.04.04.001.00	Washer Schnorr 10	4
13	0.01.03.024.00	Capscrew TCEI M10x25 UNI 5931 CL RES 8.8	2
14	0.12.01.061.00	Oil plug with gasket TCNB 1415	4
15	0.10.07.008.00	Needle cage HK40/16	1

REF.	CODE	DESCRIPTION	QT.
16	1.27.02.125.00	Ring	1
17	0.08.02.120.00	O-Ring OR 115 Viton	1
18	1.28.01.007.00	Coil spring 408A/9	1
19	1.21.02.040.00	Piston	1
20	0.08.02.121.00	O-Ring OR 4131 Viton	1
21	0.04.01.010.00	Washer 10x16x1,5 (PTO 3.2.04.17)	1
22	0.10.01.016.00	Bearing 6009	1
23	1.01.02.116.00	Rear housing	1
24	0.01.03.066.00	Capscrew TCEI M10x55 UNI 5931 CL RES 8.8	2
25	0.08.01.083.00	Seal 45x72x8 Viton	1
47	0.12.01.059.00	Cylindrical plug U-908G1/8 (PTO 3.2.04.17)	1
<b>ISO 4 BOLT PUMP STUD KIT 2.05.325.0000</b>			
26	1.30.01.077.00	Stud M14x1,5 / M12x32	2
27	0.03.01.006.00	Hex nut M12 UNI 5588 CL RES 10	4
28	0.04.02.004.00	Lockwasher 13 UNI 1751	4
29	0.02.02.050.00	Stud M12x85 UNI 5911 CL RES 8.8	2
<b>3 BOLT PUMP MTG. FLANGE KIT 2.05.326.0000</b>			
31	0.04.02.004.00	Lockwasher 13 UNI 1751	2
32	1.30.02.001.00	Hex nut M10 hexagon 14 CL RES 6S	3
33	0.02.02.017.00	Stud M10x28 UNI 5911 CL RES 8.8	3
34	1.27.01.013.00	Lockwasher 16x10,5x1 mod41/3/1	3
35	1.17.02.070.00	Splined sleeve	1
36	1.07.01.113.00	Flange	1
37	0.01.03.069.00	Capscrew TCEI M12x80 UNI 5931 CL RES 8.8	2
38	0.04.04.002.00	Washer Schnorr 12	2
39	0.03.01.006.00	Hex nut M12 UNI 5588 CL RES 10	2
40	1.30.01.077.00	Stud M14x1,5 / M12x32	2
<b>FLANGE DIN 10/SPICER 1300 KIT 2.05.327.0000</b>			
41	1.16.04.005.00	Flange DIN 10/SPICER 1300 scan. 32x36	1
42	1.27.02.103.00	Centering ring SPICER 1300/DIN 10	1
43	0.01.01.070.00	Capscrew TE M12x80 UNI 5737 CL RES 8.8	1
44	0.04.06.001.00	Lockwasher 13 DIN 137B	1
45	0.01.03.069.00	Capscrew TCEI M12x80 UNI 5931 CL RES 8.8	2
46	0.04.04.002.00	Washer Schnorr 12	2

**THE ADAPTORS SHOWN ARE SUPPLIED WITH THE PTO,  
ACCORDING TO THE GEARBOX MODEL**



REF.	CODE	DESCRIPTION	QT.
48	1.07.01.117.00	Adapter Mercedes G125-155-180 gearbox	1
49	1.29.01.119.00	Gasket PTO/gearbox	1
50	1.07.01.008.00	Adapter Volvo R6 gearbox/PTO ISO 749A/1	1
51	1.29.01.017.00	Gasket PTO/gearbox	1
52	1.07.01.141.00	Filler block ISO 4-bolt thickness 23,5	1
53	1.07.01.166.00	Adapter Mercedes Actros G210-240-260 gearbox	1
54	1.07.01.173.00	Adapter Mercedes G100 gearbox	1
55	1.07.01.184.00	Adapter Mercedes Actros-Axor gearbox	1