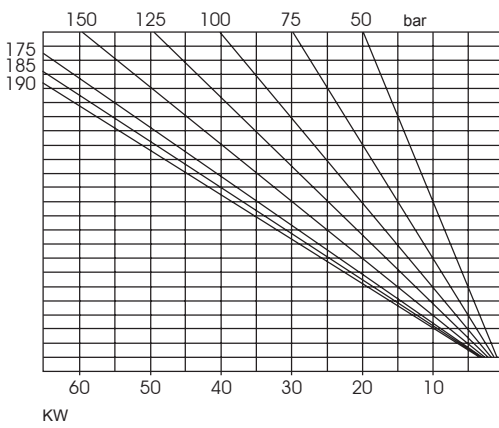


GEAR PUMP

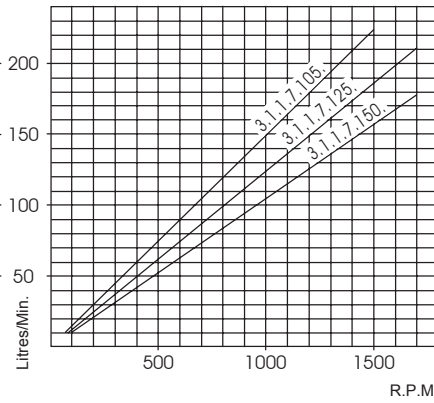
3.1.1.7.XXX.0.0.0.



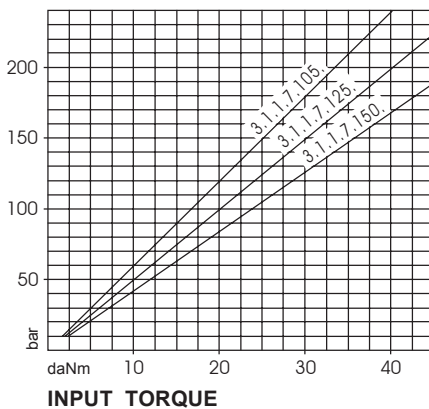
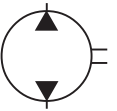
CODE	DISPLACEMENT		PRESSURE Bar		Max SPEED R.P.M.	WEIGHT Kg.
	cm ³ /rev.	GMP (IMP)	Max.	Peak		
3.1.1.7.105.0.0.0	105	23,1	140	190	1700	11,7
3.1.1.7.125.0.0.0	125	27,5	135	185	1700	12,3
3.1.1.7.150.0.0.0	150	33,0	125	175	1500	13,3



INPUT POWER



DELIVERY

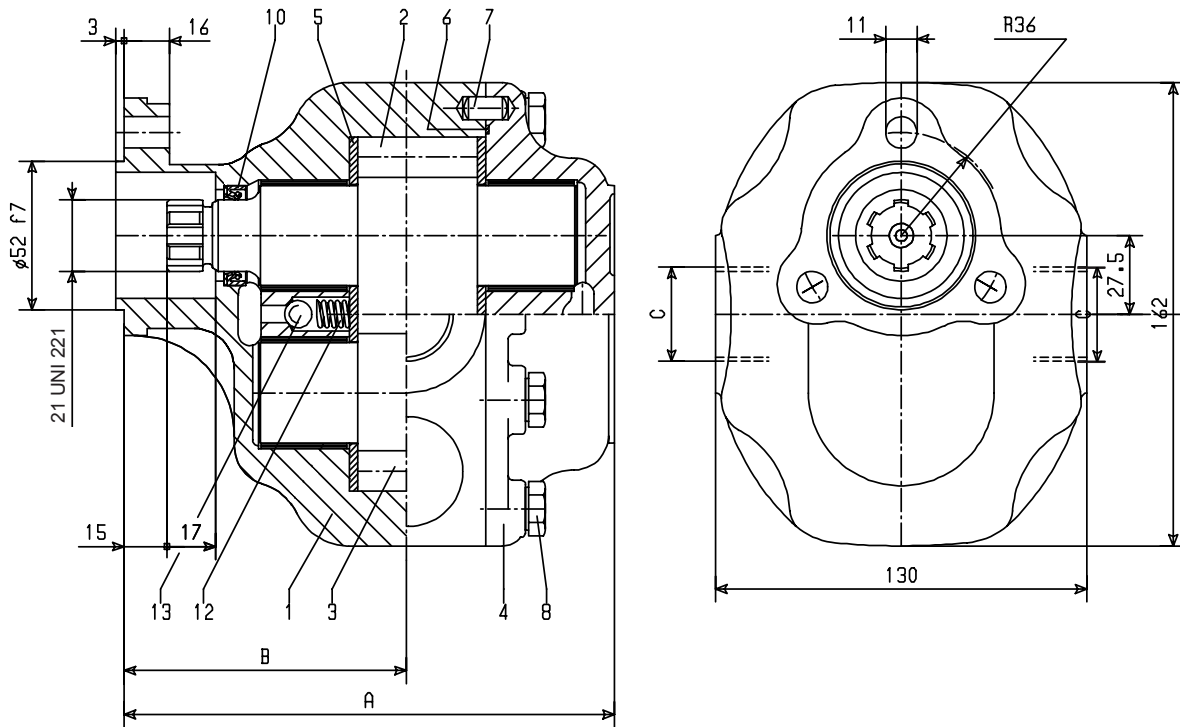


INPUT TORQUE

3.1.1.7.XXX.0.0.0

BASIC SERIAL NUMBER _____ DISPLACEMENT _____

CODE	DIMENSIONS		
	A	B	C
3.1.1.7.105.0.0.0	170,5	98,7	G 1"
3.1.1.7.125.0.0.0	178,5	98,7	G 1¼"
3.1.1.7.150.0.0.0	188,5	98,7	G 1¼"



REF.	CODE	DESCRIPTION	QT.
1	2.11.041.0000	Pump body (for 3.1.1.7.105)	1
	2.11.042.0000	Pump body (for 3.1.1.7.125)	
	2.11.043.0000	Pump body (for 3.1.1.7.150)	
2	1.12.01.049.00	Drive gear (for 3.1.1.7.105)	1
	1.12.01.048.00	Drive gear (for 3.1.1.7.125)	
	1.12.01.047.00	Drive gear (for 3.1.1.7.150)	
3	1.12.02.043.00	Driven gear (for 3.1.1.7.105)	1
	1.12.02.042.00	Driven gear (for 3.1.1.7.125)	
	1.12.02.041.00	Driven gear (for 3.1.1.7.150)	
4	2.12.012.0000	Pump cover	1
5	1.18.01.012.00	Thrust plate	2
6	1.29.02.022.00	Seal	1
7	0.11.02.001.00	Dowel 8x12	2
8	0.01.01.065.00	Hex screw TE M10x30 UNI 5739 10.9	8
10	0.08.01.076.00	Seal BABSL 25x35x6/6.5	1
12	1.28.01.003.00	Coil spring mod. 15/2	2
13	0.11.01.002.00	Ball 3/8"	2

HYDRAULIC SYSTEM

OIL

Use exclusively good quality hydraulic oil with anti-foam, anti-emulsion and anti-wear additives. The following viscosities are recommended:

very cold climate	22 cSt
cold climate	46 cSt
temperate climate	68 cSt
hot climate	100 cSt

FILTRATION

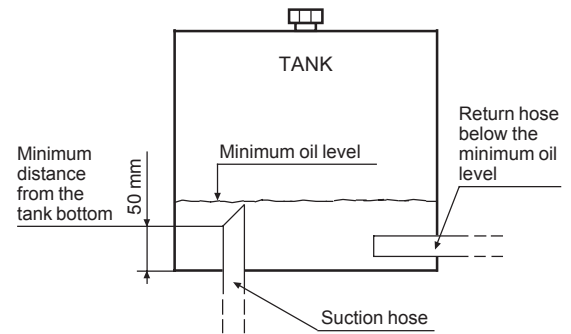
Suction filters should be avoided.

We recommend using a proper return line filter (25 micron for example).

TANK

The suction line should be approximately 50 mm above the tank floor and cut at an angle to increase the inlet section.

The return line should enter the tank well below the minimum oil level.



CLEANING THE HYDRAULIC CIRCUIT

We recommend that flushing of the system be carried out before operating a new system or after repairs.

OPERATING TEMPERATURE

Oil temperature should be kept above -20°C and below 80°C.

SUCTION FITTINGS AND HOSES

PZB low restriction suction fittings, as listed below, are recommended for easy installation.

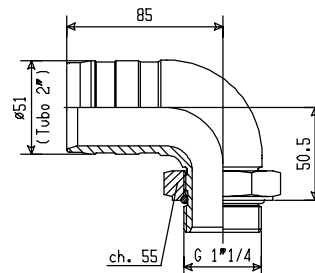
Properly sized suction hose and clips are available on request.

Ø 45 - G 1"

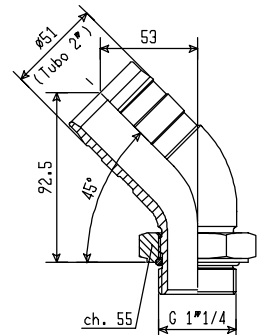
Code 2.17.008.0000

.....

Ø 51 - G 1 1/4"



Code 2.17.009.0000



Code 2.17.015.0000

CALCULATING THE TORQUE

$$M \text{ (torque, kgm)} = \frac{P \text{ (working pressure, Bar)} \times V \text{ (pump displacement, litres/min at 1000 rpm)}}{628}$$

$$\text{Example pump 3.1.1.7.105 : } \frac{150 \text{ Bar (P)} \times 105 \text{ lt. (V)}}{628} = 25 \text{ kgm (M)}$$

Caution: the calculated torque M shall not exceed the rated torque of the PTO.

CALCULATING THE POWER

$$N \text{ (power, HP)} = \frac{Q \text{ (flow, litres/min.)} \times P \text{ (working pressure, Bar)}}{450}$$