

AIR CONTROL VALVE WITH VARIABLE DESCENT SPEED TWO-WAY

3.3.2.041

THREE-WAY

3.3.2.042

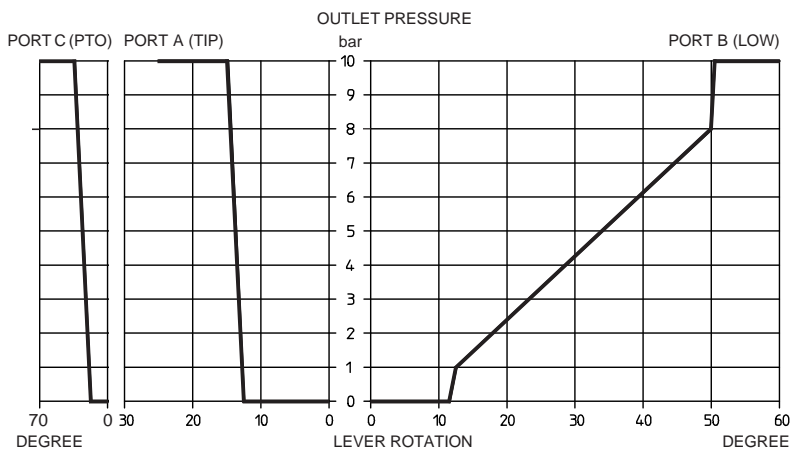


TECHNICAL SPECIFICATION

Working pressure	=	max. 12 bar
Operative temperature	=	da -40° a +80° C
Nominal diameter	=	ø 4 mm
Operating voltage	=	12 ÷ 24 V cc
Contacts	=	normally open

Disclaimer: Deadman controls are required for use in some workplaces. It is the responsibility of the customer to select the correct style of controller, Deadman or Detented, in accordance with the requirements of the intended worksite.

OUTLET PRESSURE



3.3.2.XXX.XX.00

BASIC SERIAL NUMBER _____

TYPE _____

041.18 = TWO-WAY RAISING AND LOWERING WITH SPRING RETURN TO NEUTRAL

041.30 = TWO-WAY RAISING AND LOWERING WITH LOCK IN "FAST LOWERING" POSITION

041.50 = TWO-WAY WITH LOCK IN THREE POSITIONS (HOLD/TIP/LOW)

042.21 = THREE-WAY RAISING, LOWERING, WITH SPRING RETURN TO NEUTRAL AND PTO CONTROL

042.22 = THREE-WAY RAISING, LOWERING AND PTO CONTROL, WITH SPRING RETURN TO NEUTRAL AND AUTOMATIC PTO DISENGAGEMENT

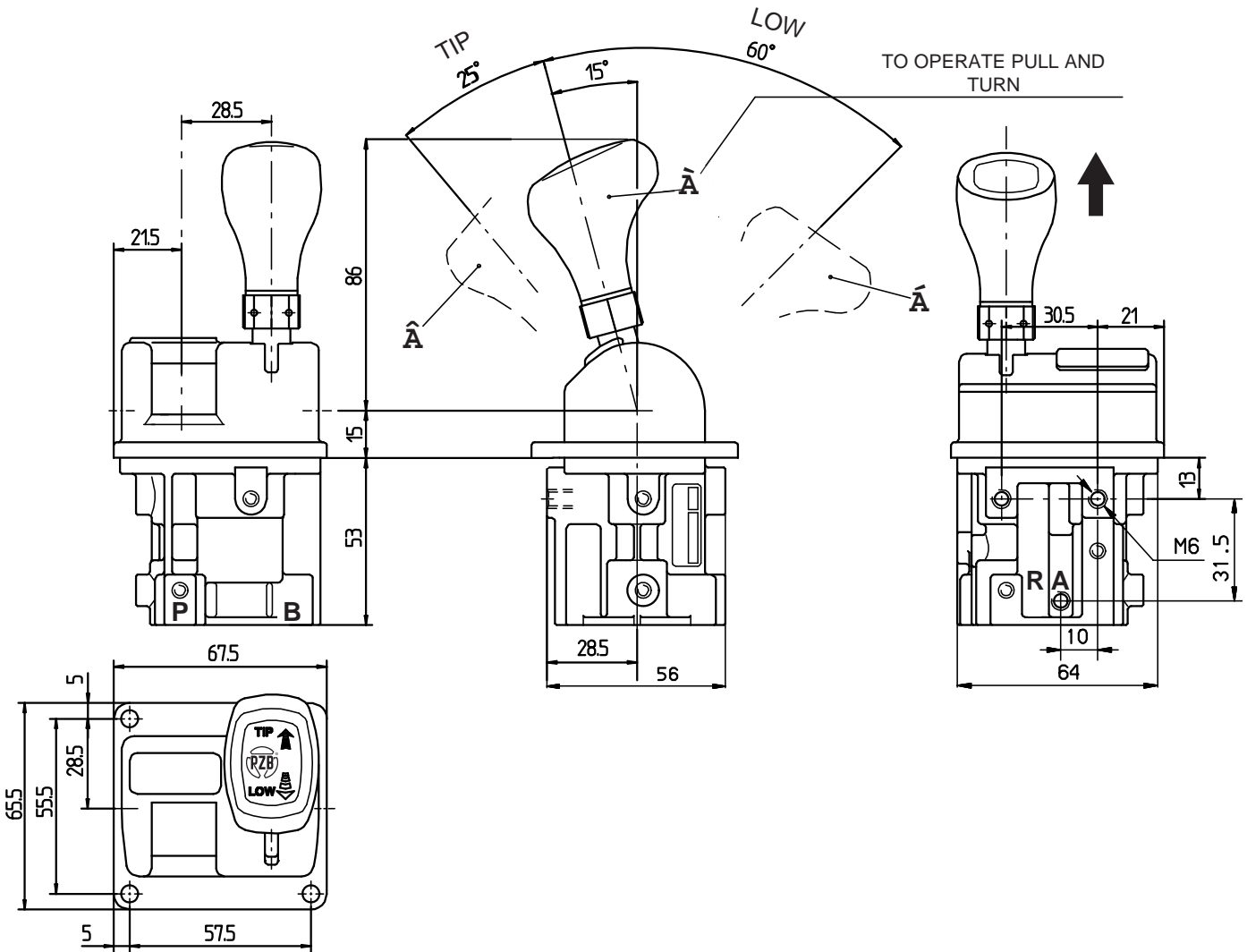
042.30 = THREE-WAY RAISING, LOWERING, WITH LOCK IN "FAST LOWERING" POSITION AND PTO CONTROL

042.31 = THREE-WAY RAISING, LOWERING, WITH AUTOMATIC PTO DISENGAGEMENT AND LOCK IN "FAST LOWERING" POSITION AND PTO CONTROL

042.50 = THREE-WAY WITH LOCK IN THREE POSITIONS (HOLD/TIP/LOW)

042.51 = THREE-WAY WITH LOCK IN THREE POSITIONS (HOLD/TIP/LOW) AND AUTOMATIC PTO DISENGAGEMENT

CODE 3.3.2.041 - 2-WAY



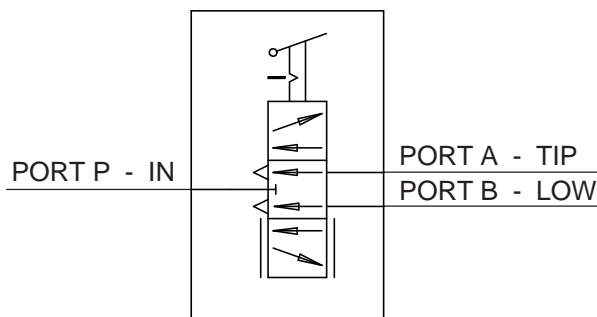
TO OPERATE PULL AND TURN

LEVER POSITION

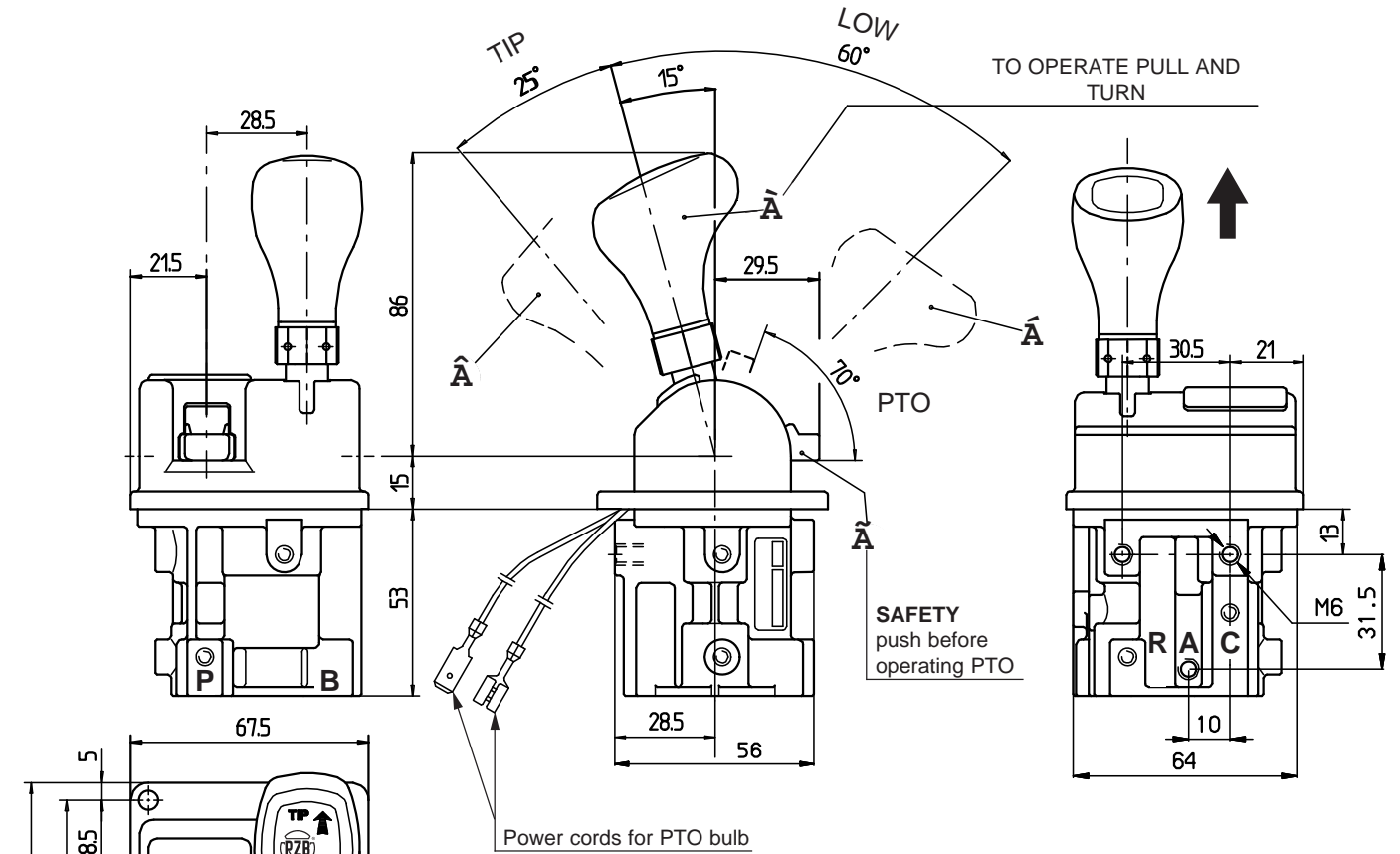
- À = hold
- Á = operation PORT B
- Â = operation PORT A

- PORT A = control tipping (TIP) G1/8"
- PORT B = control lowering (LOW) G1/8"
- PORT P = compressed air supply (IN) G1/8"
- PORT R = free exhaust (EX) M5

TIGHTENING TORQUE FOR CONNECTING
THREAD G1/8" 1.4 - 1.6 daNm



CODE 3.3.2.042 - 3-WAY



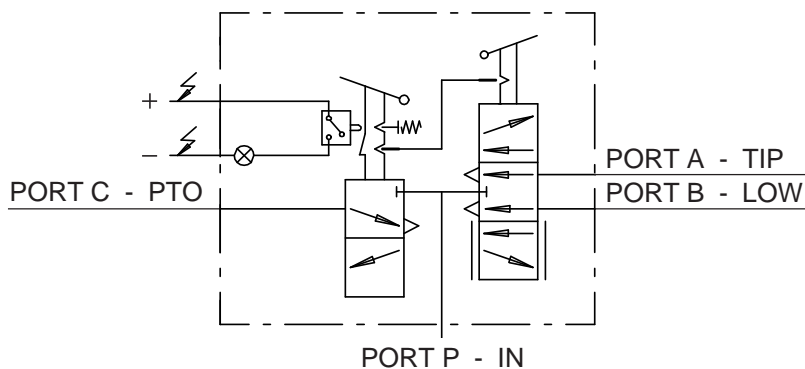
NB - when operating the lever in the lowering position, the PTO switch will automatically disengaged, except for the code 3.3.2.042.21 - 3.3.2.042.30 - 3.3.2.042.50.

LEVER POSITION

- ⌘ = hold
- ⌘ = operation PORT B
- ⌘ = operation PORT A
- ⌘ = operation PORT C (with stop)

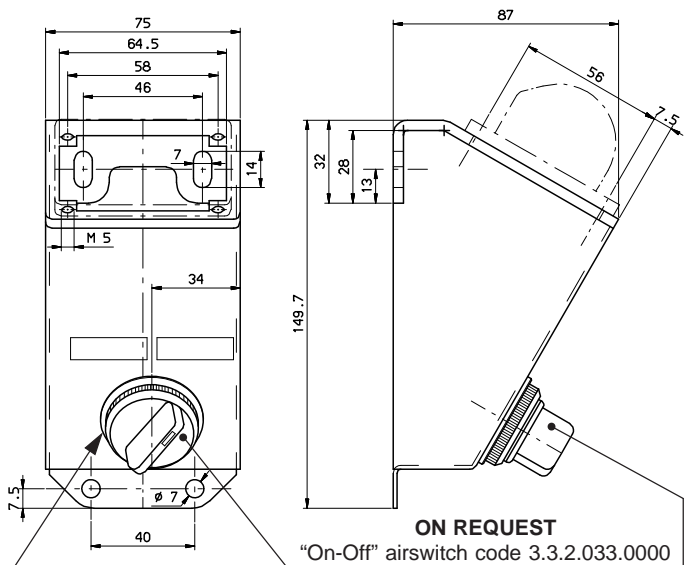
- PORT A = control tipping (TIP) G1/8"
- PORT B = control lowering (LOW) G1/8"
- PORT C = engagement power take-off (PTO) G1/8"
- PORT P = compressed air supply (IN) G1/8"
- PORT R = free exhaust (EX) M5

TIGHTENING TORQUE FOR CONNECTING
THREAD G1/8" 1.4 - 1.6 daNm



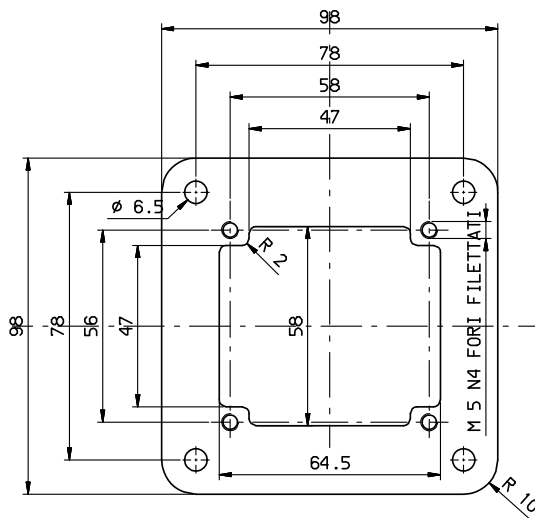
AIR CONTROL MOUNTING BRACKETS

BOX CODE 2.05.550.0000



BREAKING THE APPOSITE CIRCULAR BAFFLE PLATE AND LOWERING THE TAB IT'S POSSIBLE TO PUT ONE ADDICIONAL PNEUMATIC CONTROL (TRACTOR / TRAILER)

BRACKET CODE 2.05.551.0000



AIR SYSTEM WITH OPEN-CENTER TIPPING VALVE AND THREE-WAY PROPORTIONAL CAB CONTROL

