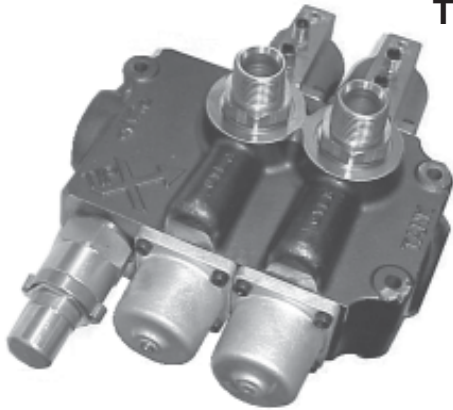
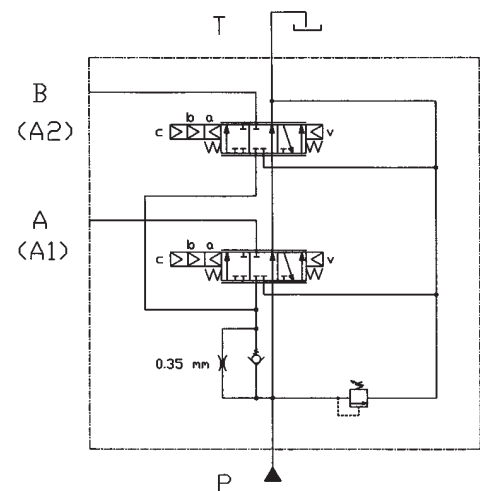
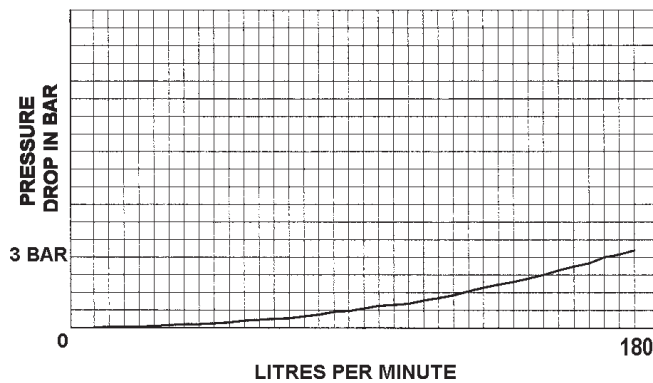


TIPX™ TRUCK & TRAILER VALVE 331180XX14



Features:

- ✓ Faster tipping cycle
- ✓ Smoother operation
- ✓ Fully proportional control
- ✓ Adjustable slow lower
- ✓ Option: Port Relief Valves
- ✓ Option: Dual flow manifold for super dumper



Technical Details:

Flow up to 180 litres/min
 Preset pressure 140 BAR (2000 PSI)
 Pump Inlet 1" BSPP
 Ram Outlet 1" BSPP
 Tank Return 1¼" BSPP
 All Ports on PR version valve are 1 5/16" UNO
 Weight: 18Kg

Technical Notes:

For tipping truck & trailer simultaneously hoists must have CBV installed.

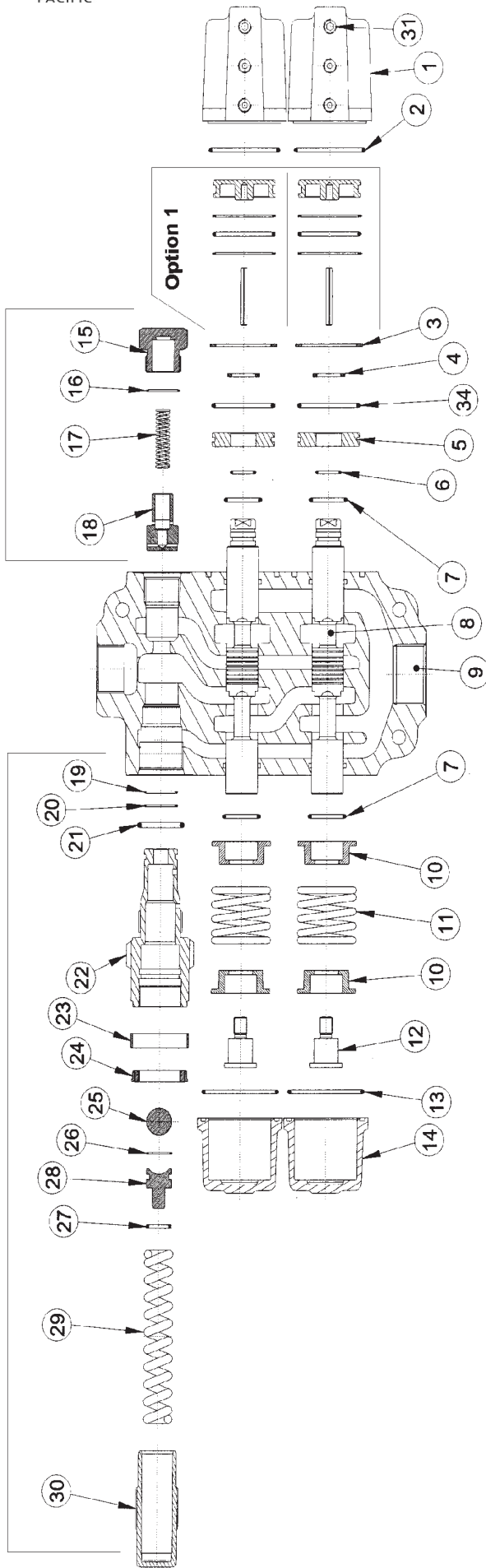
“Quick Tip” Manifold available to combine both working ports A & B providing a 300lt dump rate. Used for Semi trailer and Super dump trucks.

331180XX14XX

PR = Port Relief Valves
 00 = Proportional
 11 = Slow Lower
 (Not on PR version)

CV002

RV003



REF	CODE	DESCRIPTION	QT	REF	CODE	DESCRIPTION	QT
1	TX253066	Air Cap	2	19		Relief O-Ring	1
2	TX404021	Air Cap O-Ring	2	20		Relief O-Ring Backup	1
3	TX404021	Circlip	2	21		O-Ring	1
4	TX404020	Circlip	2	22		Relief Valve Body	1
5	TX238042	Air Piston	2	23		Anti Tamper Ring	1
6		Quad Ring	2	24		Relief Lock Nut	1
7		O-Ring	4	25		Relief Ball	1
8	TX249257	Spool	2	26		O-Ring Backup	1
9	TX204001	Valve Body	1	27		O-Ring	1
10	TX250019	Spring Cap	4	28		Spring Seat	1
11	TX416045	Spring	2	29		Relief Spring	1
12	TX244011	Spring Retainer Bolt	2	30		Relief Adjusting Screw	1
*	TX509036	Items - 10,11,12	2				
13	TX253067	Spring Cap O-Ring	2	31		1/8" Plug	2
14	TX253067	Spring Cap	2	34		Piston Quad Ring	2
15		Check Valve Retainer Plug	1				
16		O-Ring	1				
17		Check Valve Spring	1				
18		Check Valve Poppet	1				
	CV002						
						OPTION 1	
						Slow Lower Piston Kit	2
						SEAL KIT	
						TIPX™ Seal Kit	1