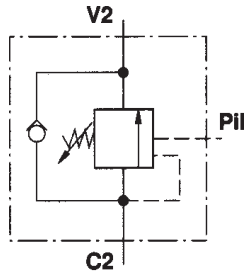


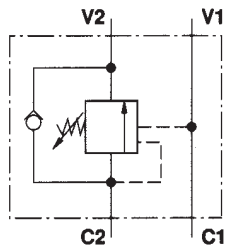
**OVERCENTRE VALVES**



**SINGLE OVERCENTRE PILOT VBCD**  
**(STEEL)**

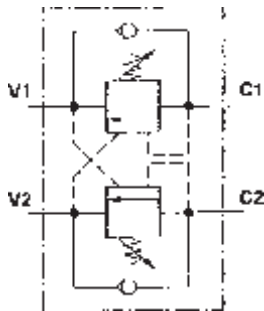
PART NUMBER	C2 (BSPP)	V2 (BSPP)	PILOT (BSPP)	MAX Lts.	PILOT RATIO	MAX PRESS. (Bar)
VBCD12SE/3VIE	1/2"	1/2"	1/4"	60	4.5:1	350

NO PHOTOGRAPH  
AVAILABLE AT  
THIS TIME



**SINGLE OVERCENTRE INLINE VBCD**  
**(STEEL)**

PART NUMBER	C1 (BSPP)	C2 (BSPP)	V1 (BSPP)	V2 (BSPP)	MAX Lts.	PILOT RATIO	MAX PRESS. (Bar)
VBCD12SE/A	1/2"	1/2"	1/2"	1/2"	60	4.5:1	350
VBCD34SE/A	3/4"	3/4"	3/4"	3/4"	95	5.5:1	350



**DUAL OVERCENTRE INLINE VBCD**  
**(STEEL)**

PART NUMBER	C1 (BSPP)	C2 (BSPP)	V1 (BSPP)	V2 (BSPP)	MAX Lts.	PILOT RATIO	MAX PRESS. (Bar)
VBCD12DE/A	1/2"	1/2"	1/2"	1/2"	60	4.5:1	350
VBCD34DE/A	3/4"	3/4"	3/4"	3/4"	95	5.5:1	350