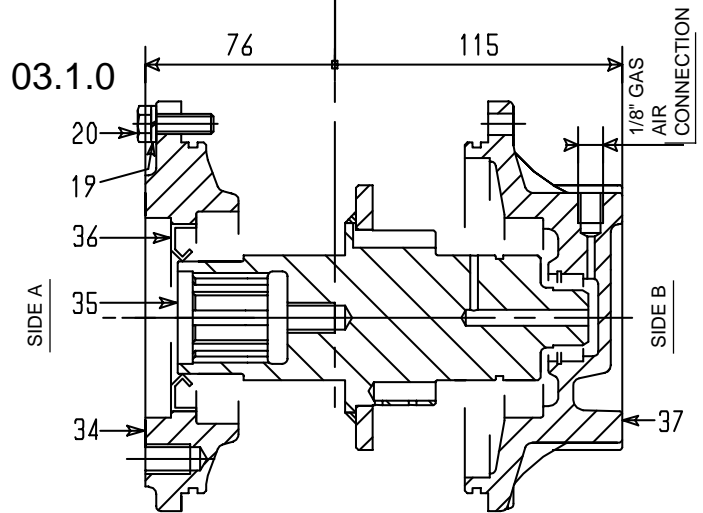
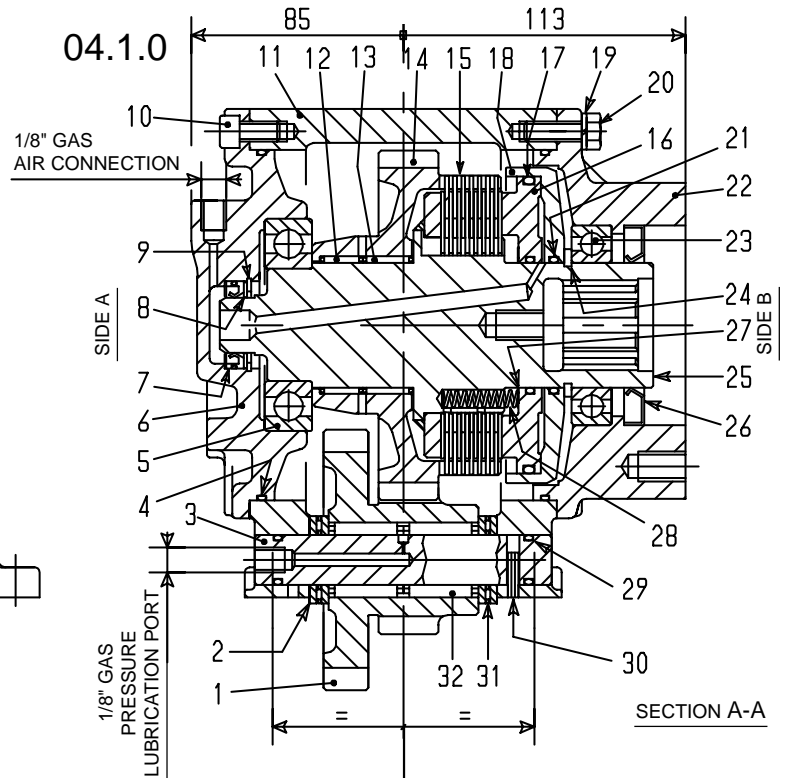
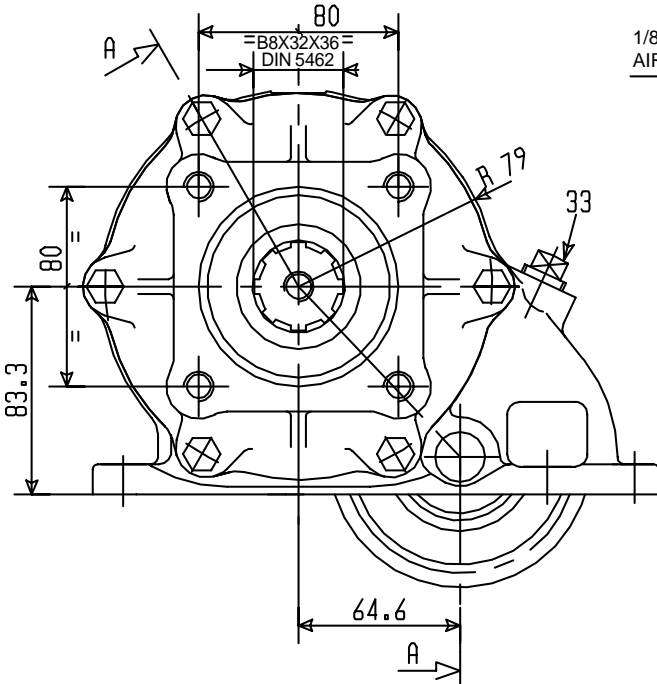


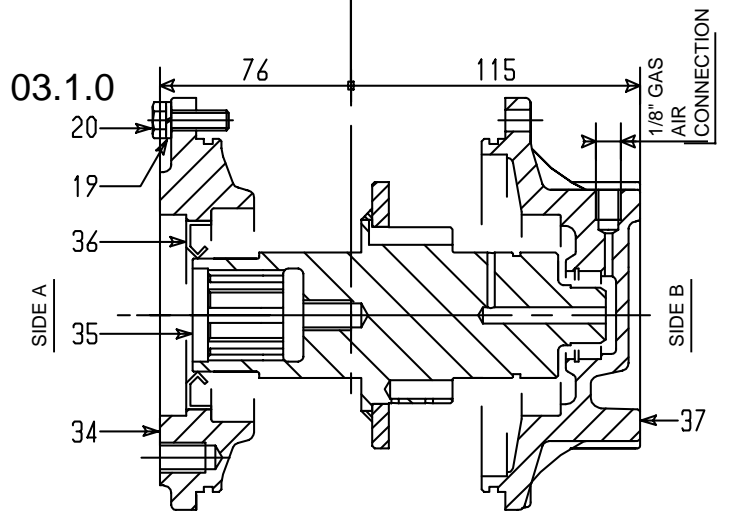
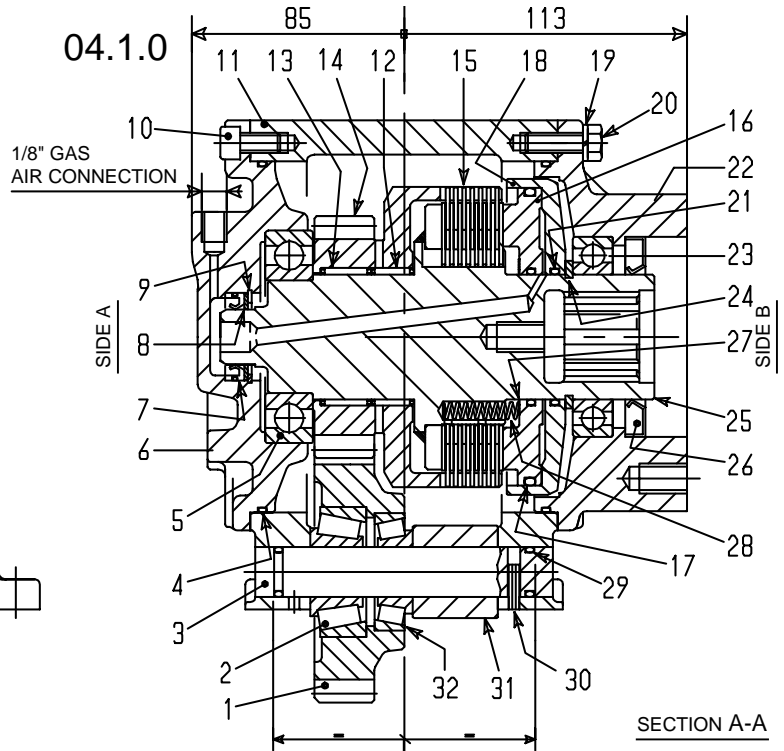
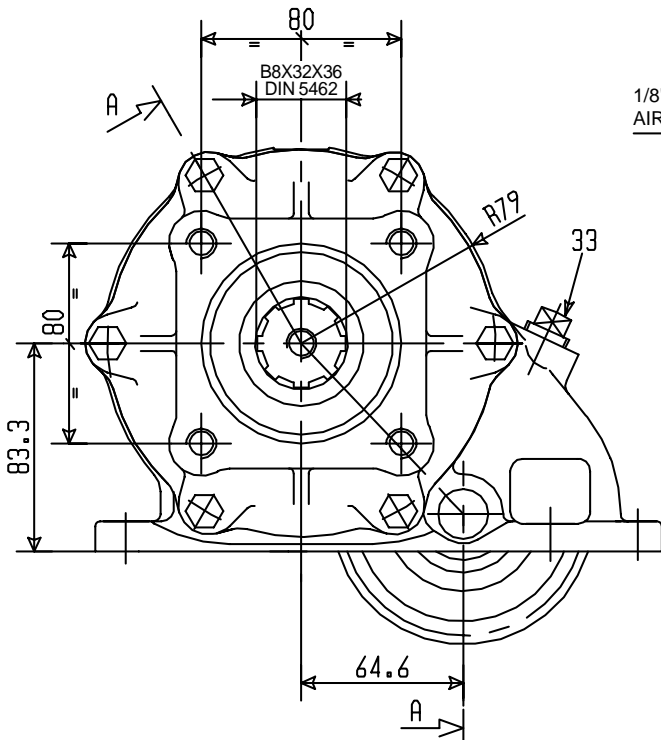
VERSION 3.2.91.1.1.



REF.	CODE	DESCRIPTION	QT.
1	1.11.02.144.00	Gear 22/17 T	1
2	0.10.11.002.00	Bearing disc LS 2035	4
3	1.14.01.069.00	Shaft	1
4	0.08.02.147.00	O-Ring OR 3525 Viton	2
5	0.10.01.003.00	Bearing 6209	1
6	1.09.01.043.00	Support (P.T.O. 3.2.91.1.1.03.2.0/04.1.0)	1
7	1.29.02.025.00	Seal	1
8	1.27.02.128.00	Spacer	1
9	0.07.02.001.00	Circlip 35i UNI 7437	1
10	0.01.03.002.00	Capscrew TCEI M8x16 UNI 5931 CL RES 8.8 (P.T.O. 3.2.91.1.1.03.2.0/04.1.0)	6
11	1.01.02.127.00	Housing	1
12	0.10.06.019.00	Needle cage K50x55x17h	1
13	0.10.06.017.00	Needle cage K50x55x20h	1
14	1.11.01.129.00	Gear 45 T	1
15	0.00.10.001.00	Clutch discs	1
16	1.21.02.042.00	Piston	1
17	0.08.02.132.00	O-Ring OR 4437 Viton	1
18	1.08.01.018.00	Cylinder	1
19	0.04.02.002.00	Lockwasher 8,4 UNI 1751 (P.T.O. 3.2.91.1.1.03.2.0/04.1.0)	6
	0.04.02.002.00	Lockwasher 8,4 UNI 1751 (P.T.O. 3.2.91.1.1.03.1.0/04.2.0)	12

REF.	CODE	DESCRIPTION	QT.
20	0.01.01.002.00	Capscrew TE M8x25 UNI 5739 CL RES 8.8 (P.T.O. 3.2.91.1.1.03.2.0/04.1.0)	6
	0.01.01.002.00	Capscrew TE M8x25 UNI 5739 CL RES 8.8 (P.T.O. 3.2.91.1.1.03.1.0/04.2.0)	12
21	0.08.02.131.00	O-Ring OR 3200 Viton	2
22	1.09.01.040.00	Support (P.T.O. 3.2.91.1.1.03.2.0/04.1.0)	1
23	0.10.01.004.00	Bearing 6010	1
24	0.07.01.028.00	Circlip AS50x3 DIN 471	1
25	1.13.01.156.00	Shaft (P.T.O. 3.2.91.1.1.03.2.0/04.1.0)	1
26	0.08.01.095.00	Seal 50x80x8 Viton (P.T.O. 3.2.91.1.1.03.2.0/04.1.0)	1
27	0.04.01.028.00	Spacer 62x54x0,3	1
28	1.28.01.114.00	Coil spring	3
29	0.08.02.136.00	O-Ring OR 119 Viton	2
30	0.05.02.001.00	Roll pin 4x18 UNI 6873	1
31	0.10.10.002.00	Axial roller bearing ANK 2035	2
32	0.10.06.027.00	Needle cage K20x30x30	2
33	0.12.01.049.00	Drain plug 18x1,5 FIAT 1/43236/11	2
34	1.09.01.042.00	Support (P.T.O. 3.2.91.1.1.03.1.0/04.2.0)	1
35	1.13.01.157.00	Shaft (P.T.O. 3.2.91.1.1.03.1.0/04.2.0)	1
36	0.08.01.094.00	Seal 45x75x10 Viton (P.T.O. 3.2.91.1.1.03.1.0/04.2.0)	1
37	1.09.01.041.00	Support (P.T.O. 3.2.91.1.1.03.1.0/04.2.0)	1

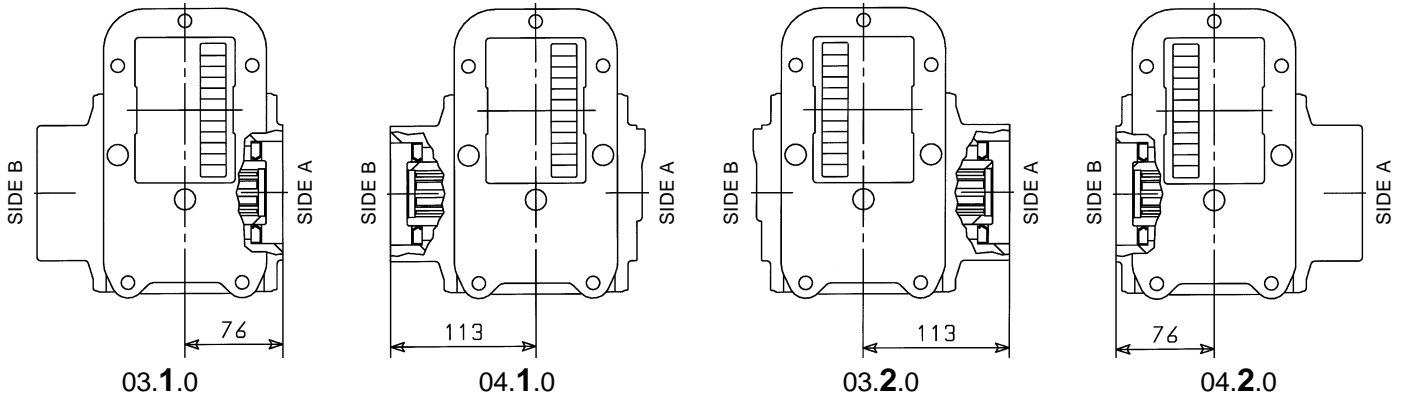
VERSION 3.2.91.3.1.



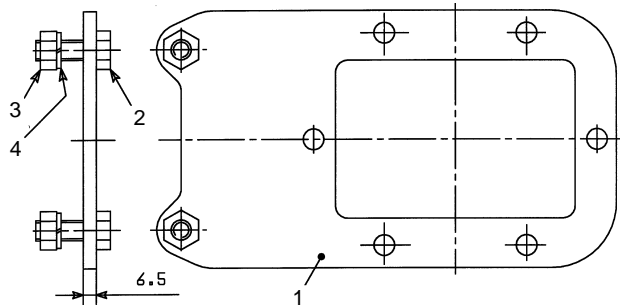
REF.	CODE	DESCRIPTION	QT.
1	1.11.01.128.00	Gear 23 T	1
2	0.10.05.004.00	Bearing 32304	1
3	1.14.01.066.00	Shaft	1
4	0.08.02.147.00	O-Ring OR 3525 Viton	2
5	0.10.01.003.00	Bearing 6209	1
6	1.09.01.043.00	Support (P.T.O. 3.2.91.3.1.03.2.0/04.1.0)	1
7	1.29.02.025.00	Seal	1
8	1.27.02.128.00	Spacer	1
9	0.07.02.001.00	Circlip 35i UNI 7437	1
10	0.01.03.002.00	Capscrew TCEI M8x16 UNI 5931 CL RES 8.8 (P.T.O. 3.2.91.3.1.03.2.0/04.1.0)	6
11	1.01.02.127.00	Housing	1
12	0.10.06.019.00	Needle cage K50x55x17h	1
13	0.10.06.017.00	Needle cage K50x55x20h	1
14	1.11.01.130.00	Gear 21 T	1
15	0.00.10.001.00	Clutch discs	1
16	1.21.02.042.00	Piston	1
17	0.08.02.132.00	O-Ring OR 4437 Viton	1
18	1.08.01.018.00	Cylinder	1
19	0.04.02.002.00	Lockwasher 8,4 UNI 1751 (P.T.O. 3.2.91.3.1.03.2.0/04.1.0)	6
	0.04.02.002.00	Lockwasher 8,4 UNI 1751 (P.T.O. 3.2.91.3.1.03.1.0/04.2.0)	12

REF.	CODE	DESCRIPTION	QT.
20	0.01.01.002.00	Capscrew TE M8x25 UNI 5739 CL RES 8.8 (P.T.O. 3.2.91.3.1.03.2.0/04.1.0)	6
	0.01.01.002.00	Capscrew TE M8x25 UNI 5739 CL RES 8.8 (P.T.O. 3.2.91.3.1.03.1.0/04.2.0)	12
21	0.08.02.131.00	O-Ring OR 3200 Viton	2
22	1.09.01.040.00	Support (P.T.O. 3.2.91.3.1.03.2.0/04.1.0)	1
23	0.10.01.004.00	Bearing 6010	1
24	0.07.01.028.00	Circlip AS50x3 DIN 471	1
25	1.13.01.156.00	Shaft (P.T.O. 3.2.91.3.1.03.2.0/04.1.0)	1
26	0.08.01.095.00	Seal 50x80x8 Viton (P.T.O. 3.2.91.3.1.03.2.0/04.1.0)	1
27	0.04.01.028.00	Spacer 62x54x0,3	1
28	1.28.01.114.00	Coil spring	3
29	0.08.02.136.00	O-Ring OR 119 Viton	2
30	0.05.02.001.00	Roll pin 4x18 UNI 6873	1
31	1.26.01.055.00	Spacer	1
32	0.10.05.001.00	Bearing 30204	1
33	0.12.01.049.00	Drain plug 18x1,5 FIAT 1/43236/11	2
34	1.09.01.042.00	Support (P.T.O. 3.2.91.3.1.03.1.0/04.2.0)	1
35	1.13.01.157.00	Shaft (P.T.O. 3.2.91.3.1.03.1.0/04.2.0)	1
36	0.08.01.094.00	Seal 45x75x10 Viton (P.T.O. 3.2.91.3.1.03.1.0/04.2.0)	1
37	1.09.01.041.00	Support (P.T.O. 3.2.91.3.1.03.1.0/04.2.0)	1

INPUT GEAR POSITION

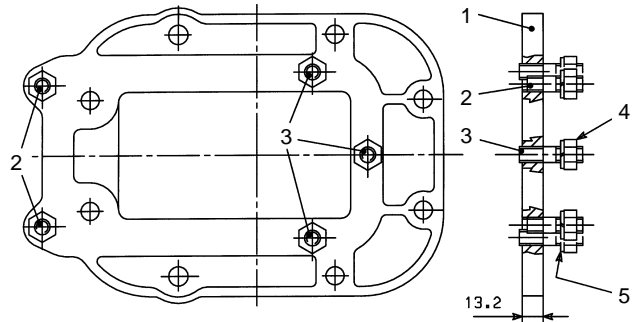


CODE 2.05.367.0000 SAE 6 BOLT ADAPTER KIT FOR ALLISON GEARBOX



REF.	CODE	DESCRIPTION	QT.
1	1.07.02.026.00	Plate SAE 6-bolt thickness 6,5	1
2	0.01.01.014.00	Capscrew TE M10x30 UNI 5739 CL RES 8.8	2
3	0.03.01.004.00	Hex nut M10 UNI 5588 CL RES 10	2
4	0.04.02.003.00	Lockwasher 10,5 UNI 1751	2

CODE 2.05.369.0000 SAE 8 BOLT ADAPTER KIT FOR FULLER - MACK - WHITE - I.H.C. - SPICER GEARBOX

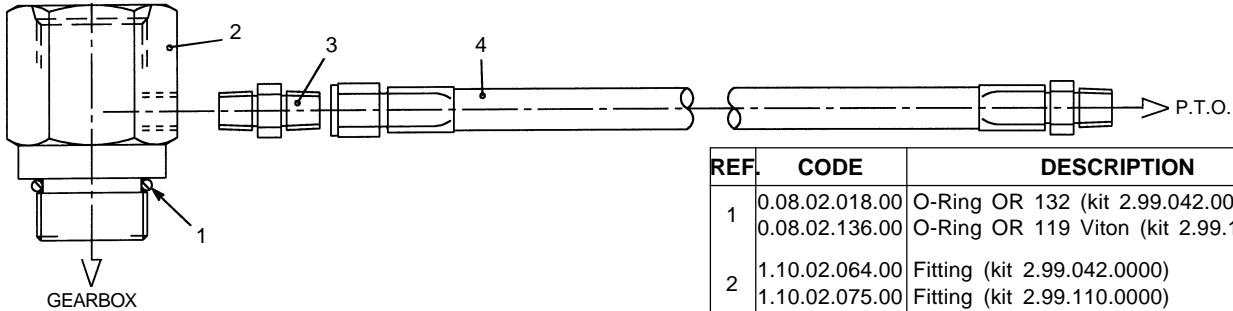


REF.	CODE	DESCRIPTION	QT.
1	1.07.01.147.00	Adapter 6/8 SAE thickness 13,2	1
2	0.02.01.001.00	Stud M10x1,25x25 UNI 5910	2
3	0.02.02.003.00	Stud M10x1,25x25 UNI 5912	3
4	0.03.01.003.00	Hex nut M10x1,25 UNI 5588 CL RES 8	5
5	0.04.02.003.00	Lockwasher 10,5 UNI 1751	5

PTO PRESSURE LUBRICATION KIT FOR ALLISON GEARBOX

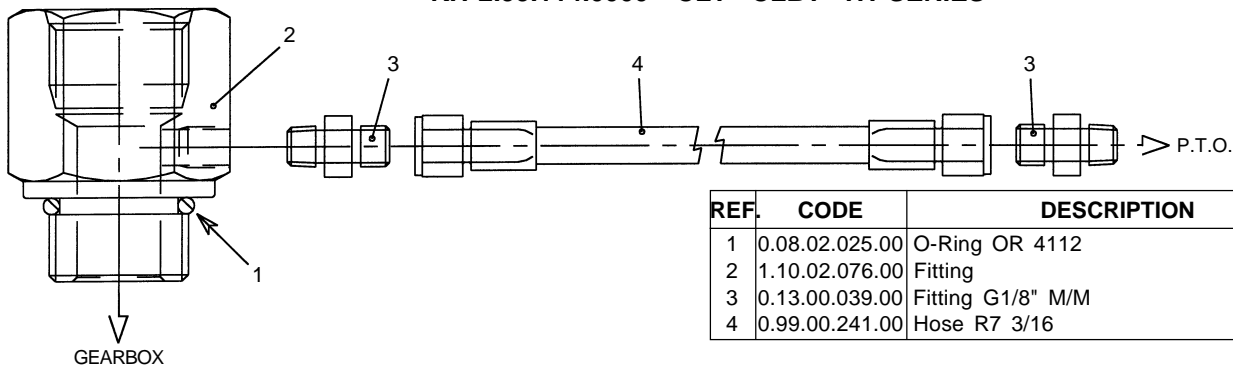
KIT 2.99.042.0000 MT - MTB SERIES

KIT 2.99.110.0000 AT SERIES



REF.	CODE	DESCRIPTION	QT.
1	0.08.02.018.00	O-Ring OR 132 (kit 2.99.042.0000)	1
	0.08.02.136.00	O-Ring OR 119 Viton (kit 2.99.110.0000)	1
2	1.10.02.064.00	Fitting (kit 2.99.042.0000)	1
	1.10.02.075.00	Fitting (kit 2.99.110.0000)	1
3	0.13.00.039.00	Fitting G1/8" M/M	1
4	0.99.00.220.00	Hose 2TE 1/4	1

KIT 2.99.114.0000 CLT - CLBT - HT SERIES



REF.	CODE	DESCRIPTION	QT.
1	0.08.02.025.00	O-Ring OR 4112	1
2	1.10.02.076.00	Fitting	1
3	0.13.00.039.00	Fitting G1/8" M/M	2
4	0.99.00.241.00	Hose R7 3/16	1