

**GEAR PUMP**

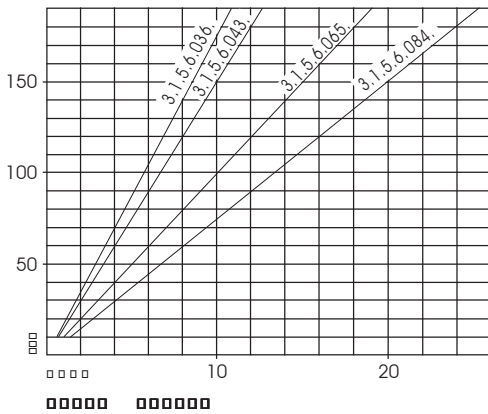
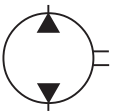
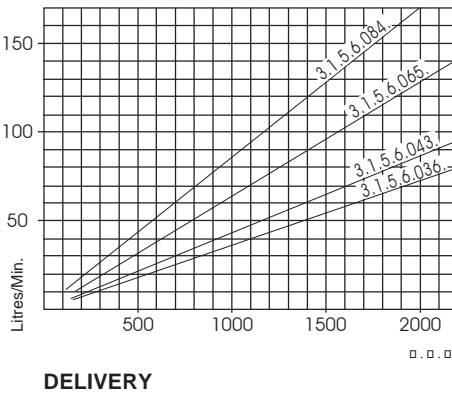
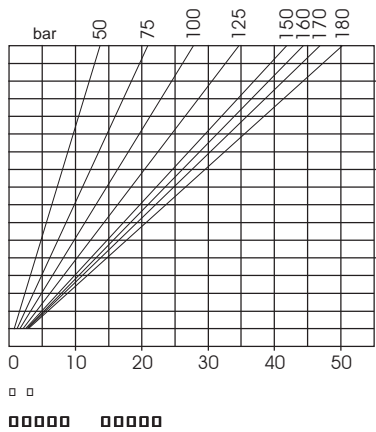
**3.1.5.6.XXX.0.0.0.**

**SERIES**

**SC**



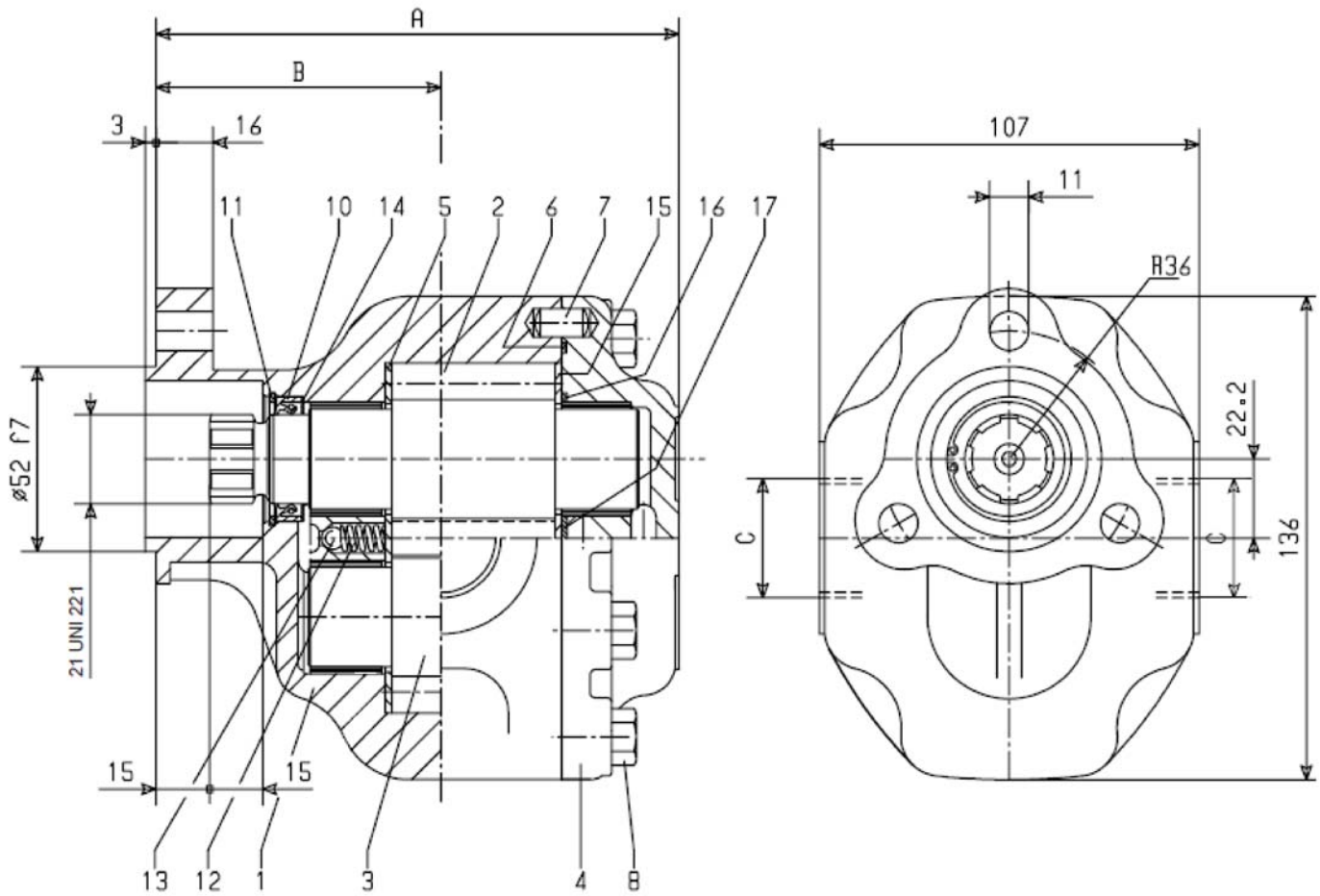
CODE	DESCRIP.	DISPLACEMENT		PRESSURE Bar		Max SPEED R.P.M.	WEIGHT Kg.
		cm <sup>3</sup> /rev.	GMP (IMP)	Max.	Peak		
3.1.5.6.065.0.0.0	SC65	65	14,3	140	170	2000	7,1
3.1.5.6.084.0.0.0	SC84	84	18,5	130	160	1800	8,0



**3.1.5.6.□□□.0.0.0**

BASIC SERIAL NUMBER \_\_\_\_\_ □□□□□□□□□□

CODE	DESCRIP.	DIMENSIONS		
		A	B	C
3.1.5.6. <b>036</b> .0.0.0	SC 36	127,3	75,3	G ¾"
3.1.5.6. <b>043</b> .0.0.0	SC 43	132,3	76,3	G ¾"
3.1.5.6. <b>065</b> .0.0.0	SC 65	147,0	80,0	G 1"
3.1.5.6. <b>084</b> .0.0.0	SC 84	162,0	80,0	G 1"



REF.	CODE	DESCRIPTION	QT.
1	2.11.003.0000	Pump body (for 3.1.5.6.036)	1
	2.11.005.0000	Pump body (for 3.1.5.6.043)	
	2.11.009.0000	Pump body (for 3.1.5.6.065)	
	2.11.010.0000	Pump body (for 3.1.5.6.084)	
2	1.12.01.035.00	Drive gear (for 3.1.5.6.036)	1
	1.12.01.036.00	Drive gear (for 3.1.5.6.043)	
	1.12.01.038.00	Drive gear (for 3.1.5.6.065)	
	1.12.01.039.00	Drive gear (for 3.1.5.6.084)	
3	1.12.02.030.00	Driven gear (for 3.1.5.6.036)	1
	1.12.02.031.00	Driven gear (for 3.1.5.6.043)	
	1.12.02.033.00	Driven gear (for 3.1.5.6.065)	
	1.12.02.034.00	Driven gear (for 3.1.5.6.084)	
4	2.12.027.0000	Pump cover	1
5	1.18.01.007.00	Thrust plate	1
6	0.08.02.129.00	O-ring OR 2375	1
7	0.11.02.001.00	Dowel 8x12	2
8	0.01.01.065.00	Hex screw TE M10x30 UNI 5739 10.9	8
10	0.08.01.076.00	Seal BABSL 25x35x6/6,5	1
11	0.07.02.001.00	Circlip 35i UNI 7437	1
12	1.28.01.106.00	Coil spring	2
13	0.11.01.007.00	Ball 1/4"	2
14	1.27.01.034.00	Washer 34,8x26x0,5	1
15	1.18.01.013.00	Thrust plate	1
16	1.29.02.023.00	Gasket	2
17	1.29.02.024.00	Gasket	2

## HYDRAULIC SYSTEM

### OIL

Use exclusively good quality hydraulic oil with anti-foam, anti-emulsion and anti-wear additives. The following viscosities are recommended:

very cold climate	22 cSt
cold climate	46 cSt
temperate climate	68 cSt
hot climate	100 cSt

### FILTRATION

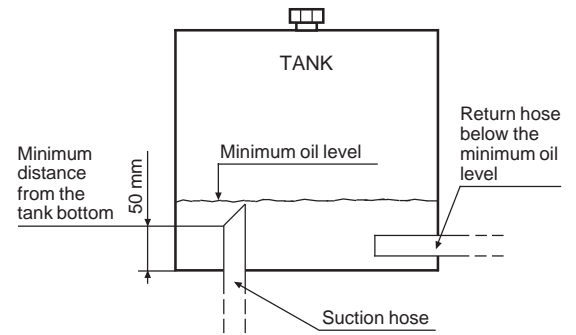
Suction filters should be avoided.

We recommend using a proper return line filter (25 micron for example).

### TANK

The suction line should be approximately 50 mm above the tank floor and cut at an angle to increase the inlet section.

The return line should enter the tank well below the minimum oil level.



### CLEANING THE HYDRAULIC CIRCUIT

We recommend that flushing of the system be carried out before operating a new system or after repairs.

### OPERATING TEMPERATURE

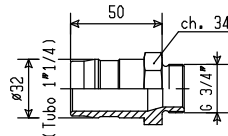
Oil temperature should be kept above -20°C and below 80°C.

### SUCTION FITTINGS AND HOSES

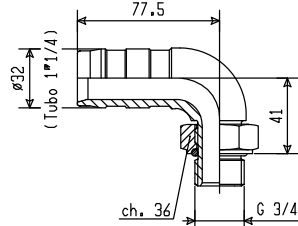
PZB low restriction suction fittings, as listed below, are recommended for easy installation.

Properly sized suction hose and clips are available on request.

#### Ø 32 - G 3/4"

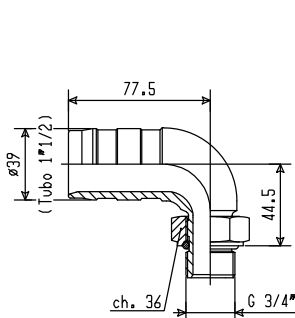


Code 1.10.02.062.00

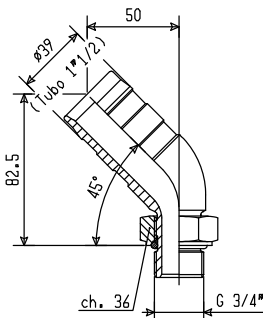


Code 2.17.007.0000

#### Ø 39 - G 3/4"

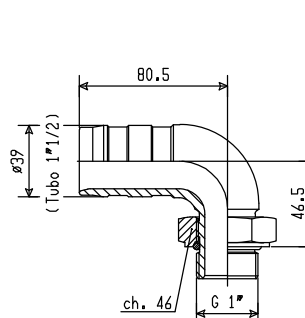


Code 2.17.011.0000

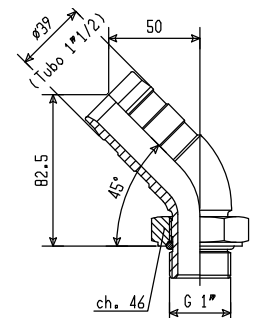


Code 2.17.012.0000

#### Ø 39 - G 1"



Code 2.17.013.0000



Code 2.17.014.0000

## CALCULATING THE TORQUE

$$M \text{ (torque, kgm)} = \frac{P \text{ (working pressure, Bar)} \times V \text{ (pump displacement, litres/min at 1000 rpm)}}{628}$$

Example pump 3.1.5.6.065 :

$$\frac{150 \text{ Bar (P)} \times 65 \text{ lt. (V)}}{628} = 15,5 \text{ kgm (M)}$$

Caution: the calculated torque M shall not exceed the rated torque of the PTO.

## CALCULATING THE POWER

$$N \text{ (power, HP)} = \frac{Q \text{ (flow, litres/min.)} \times P \text{ (working pressure, Bar)}}{450}$$

