



**POWER TAKE-OFF 3.2.63.5.**

**FOR GEARBOX :**  
SCANIA GR-GRH 880 ratio 1,5:1

**POWER TAKE-OFF 3.2.63.6.**

**FOR GEARBOX :**  
SCANIA GR-GRH 880 ratio 1:1

**POWER TAKE-OFF 3.2.63.7.**

**FOR GEARBOX :**  
SCANIA GR 870-871 ratio 1,5:1

**POWER TAKE-OFF 3.2.63.8.**

**FOR GEARBOX :**  
SCANIA GR 870-871 ratio 1:1

**POWER TAKE-OFF 3.2.63.9.**

**FOR GEARBOX :**  
SCANIA GS 750-760-770-771 ratio 1,5:1

**POWER TAKE-OFF 3.2.63.0.**

**FOR GEARBOX :**  
SCANIA GS 750-760-770-771 ratio 1:1

Technical data: refer to transmission application manual.  
**OUTPUT TORQUE:**  
40 kgm.

**WEIGHT** 3.2.63.5: kg 14,8 - 3.2.63.6: kg 15,7  
3.2.63.7: kg 14,6 - 3.2.63.8: kg 15,2  
3.2.63.9: kg 14,4 - 3.2.63.0: kg 15,3

**3.2.63.X.1.0000**

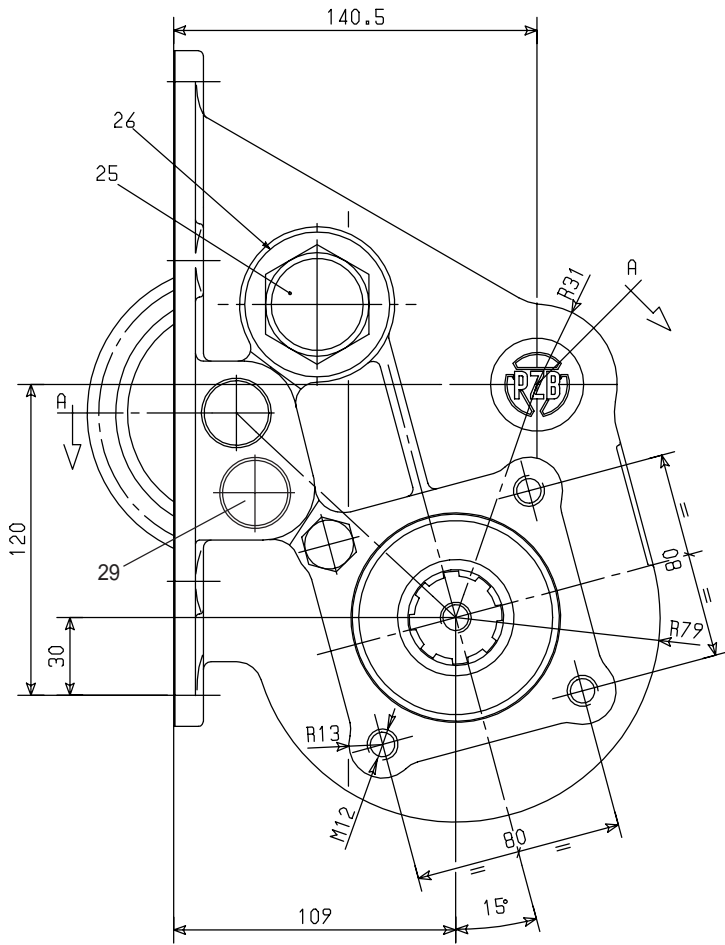
BASIC SERIAL NUMBER \_\_\_\_\_

GEARBOX TYPE

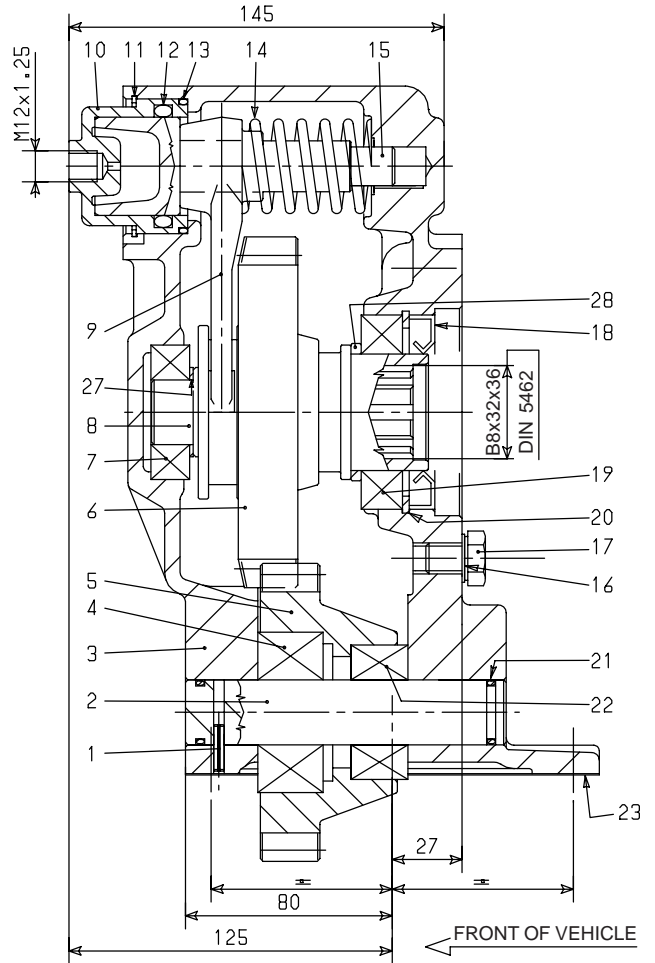
- 5** = SCANIA GR-GRH 880 ratio 1,5:1
- 6** = SCANIA GR-GRH 880 ratio 1:1
- 7** = SCANIA GR 870-871 ratio 1,5:1
- 8** = SCANIA GR 870-871 ratio 1:1
- 9** = SCANIA G-GS 770, GS 750-760-771 ratio 1,5:1
- 0** = SCANIA G-GS 770, GS 750-760-771 ratio 1:1

**OUTPUT SHAFT OPTION**

DESCRIPTION	
For remote transmission DIN 00/SPICER 1120 (see chart X group E)	<b>KIT 2.05.330.0000</b>
For remote transmission DIN 10/SPICER 1300 (see chart X group E)	<b>KIT 2.05.323.0000</b>
Direct mounting PZB pumps-3 bolt mtg. flange (see chart Y type M)	<b>KIT 2.05.324.0000</b>
Direct mounting ISO 4 bolt mtg. flange pumps (see chart Y type H)	<b>KIT 2.05.087.0000</b>



REAR VIEW



SECTION A-A

REF.	CODE	DESCRIPTION	QT.
1	0.05.02.001.00	Roll pin 4x18 UNI 6873	1
2	1.14.01.010.00	Shaft 217F/5	1
3	1.01.02.113.00	Housing (P.T.O. 3.2.63.5/6)	1
	1.01.02.114.00	Housing (P.T.O. 3.2.63.7/8/9/0)	
4	0.10.05.005.00	Bearing 32305	1
	1.11.01.101.00	Gear 22 T (P.T.O. 3.2.63.5/6)	
5	1.11.01.103.00	Gear 21 T (P.T.O. 3.2.63.7/8)	1
	1.11.01.112.00	Gear 20 T (P.T.O. 3.2.63.9/0)	
	1.11.07.106.00	Gear 17 T (P.T.O. 3.2.63.5)	
	1.11.07.107.00	Gear 25 T (P.T.O. 3.2.63.6)	
6	1.11.07.108.00	Gear 15 T (P.T.O. 3.2.63.7)	1
	1.11.07.109.00	Gear 24 T (P.T.O. 3.2.63.8)	
	1.11.07.118.00	Gear 16 T (P.T.O. 3.2.63.9)	
	1.11.07.119.00	Gear 25 T (P.T.O. 3.2.63.0)	
7	0.10.05.007.00	Bearing 30205 (P.T.O. 3.2.63.5/7/9)	1
	0.10.01.001.00	Bearing 6205 (P.T.O. 3.2.63.6/8/0)	
8	1.13.01.145.00	Shaft	1

REF.	CODE	DESCRIPTION	QT.
9	1.22.01.042.00	Fork	1
10	1.08.01.001.00	Cylinder 218B/5	1
11	0.07.05.002.00	Circlip SB52	1
12	0.08.02.010.00	O-Ring OR 6150	1
13	0.08.02.056.00	O-Ring OR 3187	1
14	1.28.01.002.00	Coil spring 216/3	1
15	1.21.01.027.00	Piston	1
16	0.04.01.004.00	Washer 12,5x18x1	1
17	0.01.01.071.00	Capscrew TE M12x16 UNI 5739 CL RES 8.8	1
18	0.08.01.078.00	Seal 45x75x10	1
19	0.10.05.026.00	Bearing 32009X (P.T.O. 3.2.63.5/7/9)	1
	0.10.01.016.00	Bearing 6009 (P.T.O. 3.2.63.6/8/0)	
20	0.07.02.044.00	Circlip 75i UNI 7437	1
21	0.08.02.014.00	O-Ring OR 3081	2
22	0.10.05.025.00	Bearing 33205	1
23	1.29.01.015.00	Gasket PTO/gearbox	1
25	0.12.01.032.00	Retainer G 1"1/4	1
26	0.08.99.003.00	Gasket 1"1/4	1
27	1.26.01.107.00	Spacer (P.T.O. 3.2.63.6/8/0)	1
28	1.26.01.106.00	Spacer (P.T.O. 3.2.63.6/8/0)	1
29	0.12.01.058.00	Plug 25x5	2