

Capacity of rams is calculated assuming a free flowing load, a minimum tipping angle of 50° and includes body weight.

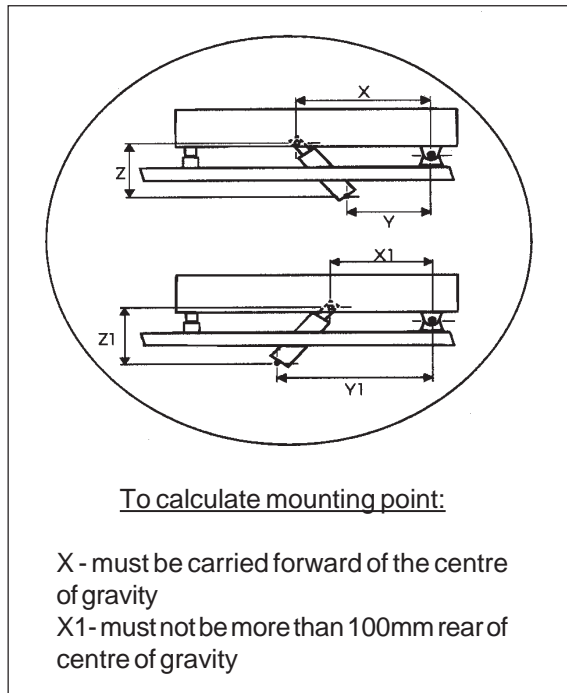
For specific capacities against known operating conditions contact PZB.

Maximum lifting capacity calculated at 170 Bar.

\* Measurement includes 20mm pullout required for mounting

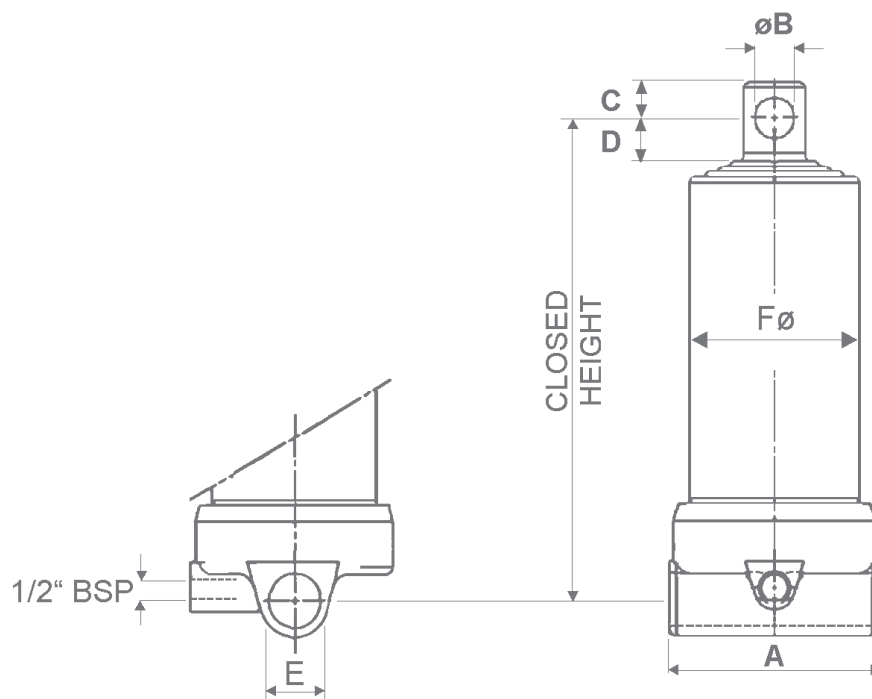
**Please note:** When replacing a cylinder in a twin underbody application - the cylinders must be of the same batch date, due to modifications made to design over time.

## "B" SERIES UNDERBODY HOISTS



| Type  | Lift mm | No. Stag | Lift Capacity 50° tip |           | Ideal mounting pivot (mm) |      |     |      |      |     | * Closed Height (mm) | Wt. Kg | Cap. Lt | Stage Diameter (mm) |    |    |     |     |
|-------|---------|----------|-----------------------|-----------|---------------------------|------|-----|------|------|-----|----------------------|--------|---------|---------------------|----|----|-----|-----|
|       |         |          | Nom. ton.             | Max. ton. | X                         | Y    | Z   | X1   | Y1   | Z1  |                      |        |         | 61                  | 76 | 91 | 107 | 126 |
| 3645F | 1200    | 4        | 7                     | 12        | 1835                      | 1433 | 232 | 1491 | 1893 | 232 | 463                  | 34.5   | 7       | ●                   | ●  | ●  | ●   |     |
| 3646F | 1300    | 4        |                       |           | 1977                      | 1554 | 245 | 1613 | 2036 | 245 | 488                  | 37.5   | 7.5     | ●                   | ●  | ●  | ●   |     |
| 3647F | 1500    | 4        |                       |           | 2262                      | 1796 | 270 | 1859 | 2325 | 270 | 543                  | 41.5   | 8.8     | ●                   | ●  | ●  | ●   |     |
| 3648F | 1700    | 4        |                       |           | 2552                      | 2037 | 297 | 2105 | 2620 | 297 | 593                  | 45     | 10      | ●                   | ●  | ●  | ●   |     |
| 3649F | 2000    | 4        |                       |           | 2975                      | 2400 | 332 | 2473 | 3048 | 332 | 660                  | 49.5   | 11      | ●                   | ●  | ●  | ●   |     |

## "B" SERIES UNDERBODY HOISTS



Dimensions of Rams (mm)

| Type  | A   | B  | C  | D  | E  | F   | *<br>Closed Height | Seal kit |
|-------|-----|----|----|----|----|-----|--------------------|----------|
| 3645F | 150 | 31 | 32 | 30 | 36 | 124 | 463                | SKCY004  |
| 3646F | 150 | 31 | 32 | 30 | 36 | 124 | 488                | SKCY004  |
| 3647F | 150 | 31 | 32 | 30 | 36 | 124 | 543                | SKCY004  |
| 3648F | 150 | 31 | 32 | 30 | 36 | 124 | 593                | SKCY004  |
| 3649F | 150 | 31 | 32 | 30 | 36 | 124 | 660                | SKCY004  |