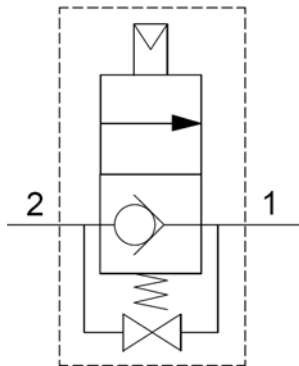
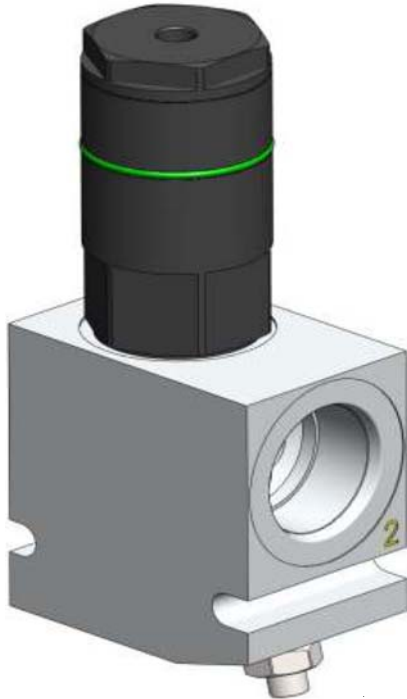


CBVA150BP TIP X HOIST BLOCKING VALVE



DESCRIPTION

In line, direct acting, pneumatically operated hoist check valve for use in blocking or load holding

OPERATION

To raise flow goes from port 1 - 2

To lower flow goes from port 2 - 1

Manual bypass from port 2 -1

FEATURES

Hardened seats for long life and low leakage

Low Pressure Drop

Anodised cylinder and stainless piston for corrosion protection

RATINGS

Operation Pressure: 207 bar (3000psi)

Recommended max flow - 150 LPM

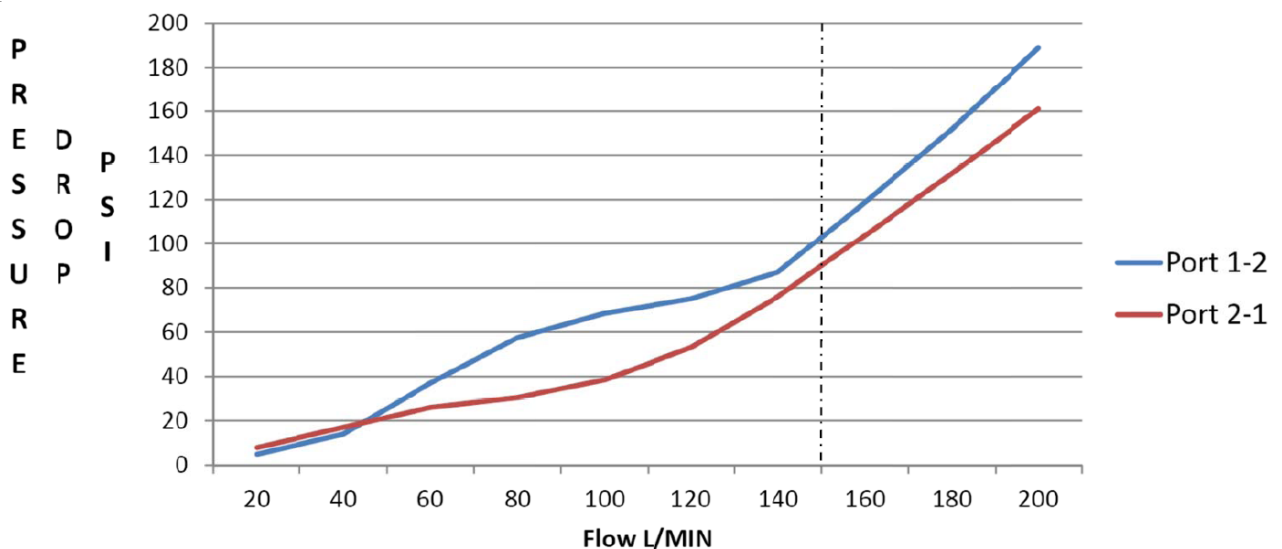
Flow: See performance chart

Internal Leakage: 0.15cc/minute (3 drops/minute) maximum at 270 bar

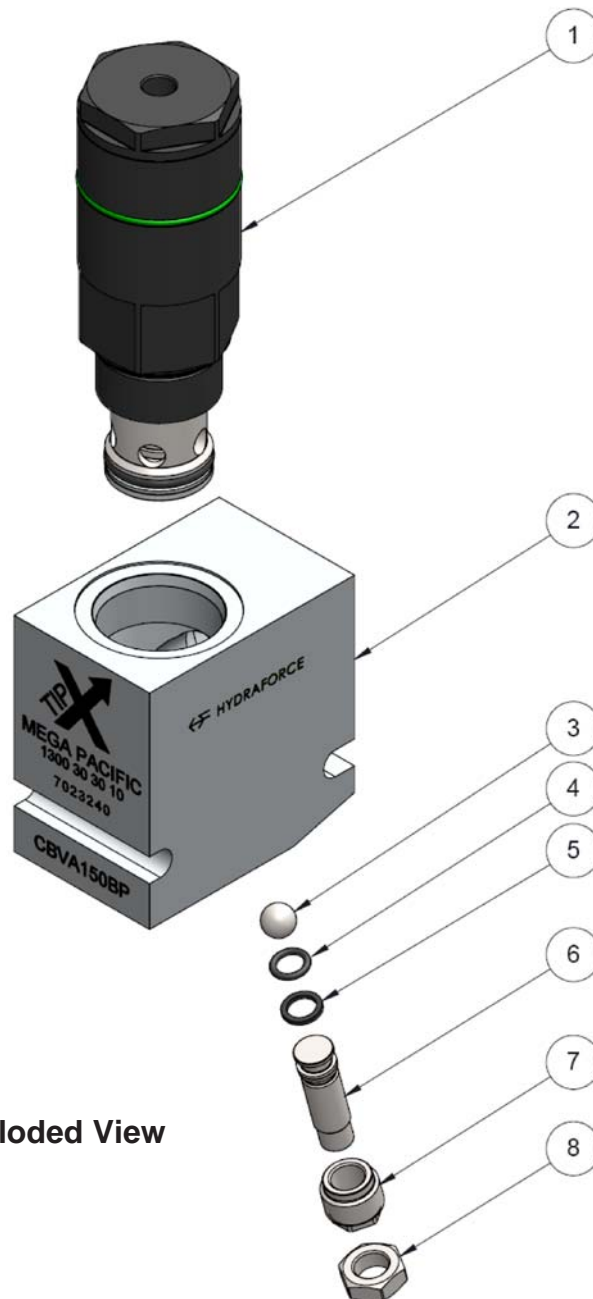
Air pressure Required: 5.5 bar (80 PSI)

Ports 1 & 2 = 15/16" UN SAE:16

PERFORMANCE OP-APV-16-22



Item	Part No	Description	Qty.
1	505120	OP-APV-16-22 Hoist Blocking Valve	1
2	222266C	Hydraforce Line Block - (Modified 7023240)	1
3	417007	3/8" Chrome Steel Ball	1
4	401002	BS 011 Nitrile O-Ring	1
5	402021	BU 011 Nitrile Backup	1
6	244018	Kick Down Sequence Adjusting Screw	1
7	240193	Retaining Plug	1
8	235035	Kickdown Sequence Valve Nut	1



Line Block Exploded View