

POWER TAKE-OFF 3.2.79.0.

FOR GEARBOX :

ISUZU MYY 5T
MYX 6P



Technical data: refer to transmission application manual.
OUTPUT TORQUE:
20 kgm. (increase of 50% for intermittent service).

WEIGHT: kg. 9,1

3.2.79.0.X.XX.1.X

BASIC SERIAL NUMBER

VERSION

3 = MECHANICAL PUSH-PULL CONTROL
4 = ELECTRIC CONTROL

COMPANION FLANGE FOR REMOTE TRANSMISSION

0 = NO OPTION

1 = SPICER 1120 CODE 2.05.054.0000

2 = SPICER 1300 CODE 2.05.055.0000

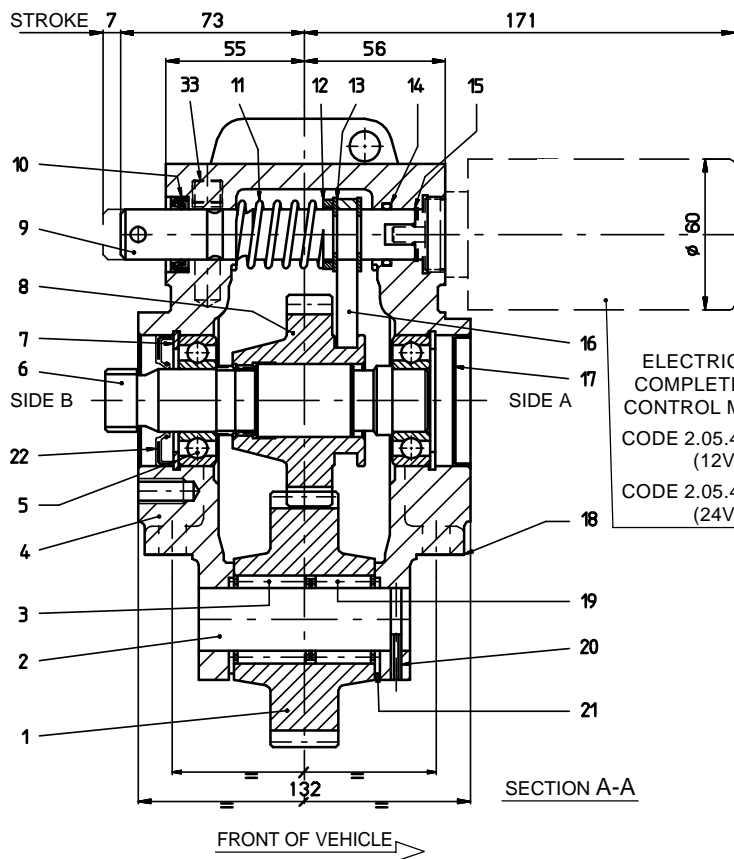
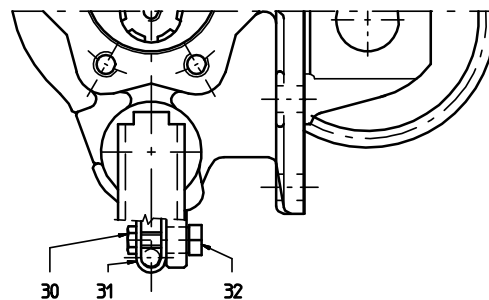
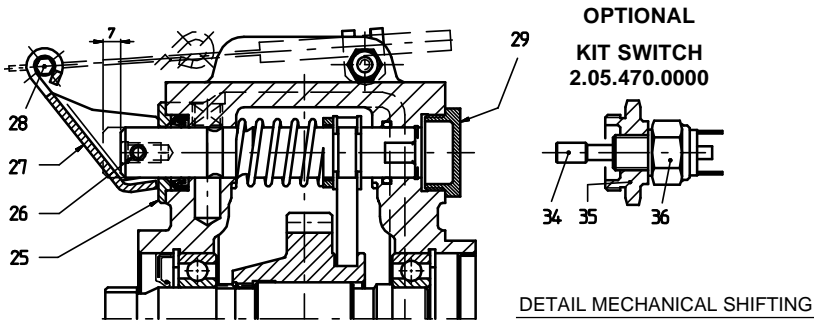
3 = DIN 00 CODE 2.05.056.0000

6 = DIN 10 CODE 2.05.077.0000

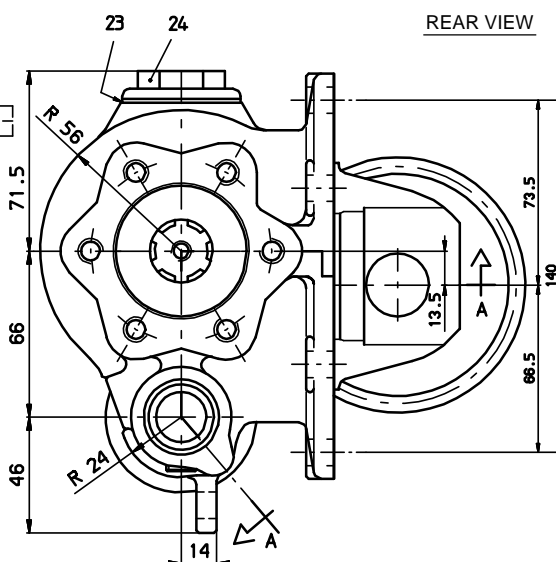
OUTPUT SHAFT OPTION

OUTPUT SHAFT OPTION

DESCRIPTION	CODE
For remote transmission (see chart X group A)	02
Direct mounting PZB pumps-3 bolt mtg. flange (see chart Y type A)	04



ELECTRIC UNIT
COMPLETE WITH
CONTROL MODULE
CODE 2.05.473.0000
(12V)
CODE 2.05.474.0000
(24V)



REF.	CODE	DESCRIPTION	QT.
1	1.11.01.197.00	Gear 32 T	1
2	1.14.01.048.00	Shaft	1
3	0.10.06.007.00	Needle cage K25x35x30	1
4	1.01.02.153.00	Housing	1
5	0.10.01.001.00	Bearing 6205	2
6	1.13.01.155.00	Shaft	1
7	0.07.02.004.00	Circlip 52i UNI 7437	2
8	1.11.07.174.00	Gear 26 T	1
9	1.14.03.087.00	Shaft	1
10	0.08.01.005.00	Seal 20x30x7	1
11	1.28.01.084.00	Coil spring	1
12	1.26.01.110.00	Distanziale	1
13	0.07.03.001.00	Circlip RS15 UNI 7434	2
14	0.08.02.014.00	O-Ring OR 3081	1
15	0.07.02.049.00	Circlip 20i UNI 7437	1
16	1.22.01.050.00	Fork	1
17	0.12.01.044.00	Plug 52x7	1
18	1.29.01.501.00	Gasket PTO/gearbox SAE 6-bolt/metr.0,5	1
19	0.10.06.008.00	Needle cage K25x35x25	1

REF.	CODE	DESCRIPTION	QT.
20	0.05.02.001.00	Roll pin 4x18 UNI 6873	1
21	1.27.01.033.00	Washer 43x25,2x2	2
22	0.08.01.001.00	Seal 25x52x8	1
23	0.08.99.005.00	Gasket 1"	1
24	0.12.01.074.00	Retainer 1" Gas	1
25	1.27.02.090.00	Washer	1
26	0.05.02.019.00	Roll pin 6x28 UNI 6873	1
27	1.23.00.041.00	Lever	1
28	0.99.00.132.00	Clamp with head screw art.1713	1
29	0.12.01.100.00	Plug M30	1
30	0.01.01.027.00	Capscrew TE M6x20 UNI 5739 CL RES 8.8	1
31	1.99.00.181.00	Hose clamp	1
32	1.30.02.020.00	Hex nut	1
33	0.12.01.015.00	Plug	1
ON REQUEST: KIT SWITCH 2.05.470.0000			
34	0.11.02.001.00	Dowel 8x12	1
35	1.30.03.056.00	Cover	1
36	0.99.00.226.00	Indicator switch	1